



**Operating Instruction Manual**  
**Generic Slave DTM for Sercos Slave Devices**  
**Configuration of Sercos Slave Devices**

**Hilscher Gesellschaft für Systemautomation mbH**

**[www.hilscher.com](http://www.hilscher.com)**

DOC090302UM07EN | Revision 7 | English | 2017-03 | Released | Public

# Table of Contents

1	INTRODUCTION.....	4
1.1	About this Manual .....	4
1.1.1	Descriptions of the Dialog Panes .....	4
1.1.2	Online Help .....	4
1.1.3	List of Revisions .....	5
1.1.4	Conventions in this Manual .....	6
1.2	Legal Notes.....	7
1.3	Registered Trademarks .....	10
1.4	About Generic Sercos Slave DTM .....	10
1.4.1	Requirements .....	11
1.5	Dialog Structure of the Generic Sercos Slave DTM .....	12
1.5.1	General Device Information.....	13
1.5.2	Navigation Area .....	13
1.5.3	Dialog Panes .....	14
1.5.4	OK, Cancel, Apply and Help .....	15
1.5.5	Table Lines .....	15
1.5.6	Status Bar .....	16
2	GETTING STARTED.....	17
2.1	Configuration Steps .....	17
3	OFFLINE PARAMETERIZATION.....	19
3.1	Support for Multi-Slave Devices .....	19
3.2	Setting Slave Parameters - Offline Configuration .....	21
3.3	Electronic Label .....	22
3.4	Overview Configuration .....	24
3.5	General .....	26
3.6	User-defined Parameters.....	28
3.6.1	Columns of upper Table .....	29
3.6.2	Rules for Input in Column 'Action' of upper Table .....	31
3.6.3	Rules for Input in Column 'Value' of upper Table.....	32
3.6.4	Columns of the lower Tree-List Grid.....	34
3.7	FSP IO .....	36
3.7.1	IO Modules .....	37
3.7.2	IO Modules - Module Configuration Table .....	39
3.7.3	IO Modules - Register Card 'General' .....	41
3.7.4	IO Modules - Register Card 'PDIN' .....	43
3.7.5	IO Modules - Register Card 'PDOUT' .....	44
3.7.6	IO Modules - Register Card 'DIAGIN'.....	45
3.7.7	IO Modules - Register Card 'DIAGOUT'.....	46
3.7.8	IO Modules - Register Card 'Parameter Set' .....	47

3.8	Process Data .....	49
3.9	FSP Drive .....	51
3.9.1	Producer Connections .....	51
3.9.2	Consumer Connections .....	54
3.9.3	Error Messages when editing Producer or Consumer Dialog Pane .....	57
3.10	Device Description .....	60
3.10.1	SDDML Viewer .....	60
4	ONLINE PARAMETERIZATION .....	62
4.1	List-IDNs .....	62
4.2	Invoking the Dialog Pane 'Online Parameterization' .....	63
4.3	Parts of Dialog Pane 'Online Parameterization' .....	65
4.3.1	Upper Part of Dialog Pane 'Online Parameterization' .....	65
4.3.2	Lower Part of Dialog Pane 'Online Parameterization' .....	72
4.4	Step-by-step Instructions for Dialog Pane 'Online Parameterization' .....	75
4.4.1	Display of List of all IDNs stored within a List-IDN .....	75
4.4.2	Selection of IDNs of which more precise Information is to be displayed .....	76
4.4.3	Preselect a Data IDN for Read or Write Access .....	77
4.4.4	Preselect a Procedure IDN for Execution .....	78
4.4.5	Execute Action .....	79
5	ONLINE FUNCTIONS .....	80
5.1	Connecting/Disconnecting Device .....	80
6	APPENDIX .....	81
6.1	User Rights .....	81
6.1.1	Configuration .....	81
6.2	References .....	81
6.3	List of Figures .....	82
6.4	List of Tables .....	83
6.5	Glossary .....	84
6.6	Contacts .....	88

# 1 Introduction

## 1.1 About this Manual

This manual provides information on how to set up Sercos Slave devices described with SDDML files. These devices can be configured with the Sercos generic Slave DTM within an FDT Framework.

### 1.1.1 Descriptions of the Dialog Panes

The table below gives an overview for the individual dialog panes descriptions:

Section	Subsection	Manual Page
<b>Offline Parameterization</b>	<i>Support for Multi-Slave Devices</i>	19
	<i>Electronic Label</i>	21
	<i>Overview Configuration</i>	24
	<i>General</i>	26
	<i>User-defined Parameters</i>	28
	<i>FSP IO</i>	36
	<i>FSP Drive</i>	51
	<i>Device Description</i>	60
	<i>SDDML Viewer</i>	60
<b>Online Parameterization</b>	<i>Parts of Dialog Pane 'Online Parameterization'</i>	65
	<i>Upper Part of Dialog Pane 'Online Parameterization'</i>	
	<i>Lower Part of Dialog Pane</i>	72
	<i>Step-by-step Instructions for Dialog Pane 'Online Parameterization'</i>	75

Table 1: Descriptions Dialog Panes

### 1.1.2 Online Help

The generic Sercos Slave DTM contains an integrated online help facility.

- To open the online help, click on **Help** or press **F1**.

### 1.1.3 List of Revisions

Index	Datum	Version	Component	Chapter	Revision
5	12-09-18	1.1.x.x, 1.1.x.x	SIIGenericSlaveDTM.dll, SIIGenericSlaveGUI.ocx	all, 3,  1.4.1  3.2 4.2	Revised, Support for multiple slots in FSP IO, Small corrections, Section <i>Requirements</i> updated.  Sections <i>Setting Slave Parameters</i> and <i>Invoking the Dialog Pane 'Online Parameterization'</i> rewritten
6	13-08-09	1.1.x.x, 1.1.x.x	SIIGenericSlaveDTM.dll, SIIGenericSlaveGUI.ocx	1.4.1  3.5  3.6  3.9.1  3.9.2  3.7.1 3.7.6 3.7.7	Section <i>Requirements</i> , Windows 8 added. Added description of checkboxes <i>Hotplug</i> and <i>NRT</i> . Added list of SCP Classes. All figures updated. Added description of column "Mask". Figure 14 updated. Added description of column "Name". Figure 27 updated. Added description of column "Name". Figure 28 updated. Figure 18 updated as there are 2 new dialog panes, text changes Added this new section Added this new section
7	17-02-17	1.1000.x.x, 1.1000.x.x	SIIGenericSlaveDTM.dll, SIIGenericSlaveGUI.ocx	1.4.1	Section <i>Requirements</i> Internet access added, Windows 8.1 and Windows 10 added.  Terminology adapted to current Sercos convention ("sercos" => "Sercos").

## 1.1.4 Conventions in this Manual

Notes, operation instructions and results of operation steps are marked as follows:

### Notes



**Important:** <important note you must follow to avoid malfunction>



**Note:** <general note>



<note, where to find further information>

### Operation Instructions

1. <instruction>
2. <instruction>

or

➤ <instruction>

### Results

⇒ <result>

## 1.2 Legal Notes

### Copyright

© Hilscher Gesellschaft für Systemautomation mbH

All rights reserved.

The images, photographs and texts in the accompanying materials (in the form of a user's manual, operator's manual, Statement of Work document and all other document types, support texts, documentation, etc.) are protected by German and international copyright and by international trade and protective provisions. Without the prior written consent, you do not have permission to duplicate them either in full or in part using technical or mechanical methods (print, photocopy or any other method), to edit them using electronic systems or to transfer them. You are not permitted to make changes to copyright notices, markings, trademarks or ownership declarations. Illustrations are provided without taking the patent situation into account. Any company names and product designations provided in this document may be brands or trademarks by the corresponding owner and may be protected under trademark, brand or patent law. Any form of further use shall require the express consent from the relevant owner of the rights.

### Important notes

Utmost care was/is given in the preparation of the documentation at hand consisting of a user's manual, operating manual and any other document type and accompanying texts. However, errors cannot be ruled out. Therefore, we cannot assume any guarantee or legal responsibility for erroneous information or liability of any kind. You are hereby made aware that descriptions found in the user's manual, the accompanying texts and the documentation neither represent a guarantee nor any indication on proper use as stipulated in the agreement or a promised attribute. It cannot be ruled out that the user's manual, the accompanying texts and the documentation do not completely match the described attributes, standards or any other data for the delivered product. A warranty or guarantee with respect to the correctness or accuracy of the information is not assumed.

We reserve the right to modify our products and the specifications for such as well as the corresponding documentation in the form of a user's manual, operating manual and/or any other document types and accompanying texts at any time and without notice without being required to notify of said modification. Changes shall be taken into account in future manuals and do not represent an obligation of any kind, in particular there shall be no right to have delivered documents revised. The manual delivered with the product shall apply.

Under no circumstances shall Hilscher Gesellschaft für Systemautomation mbH be liable for direct, indirect, ancillary or subsequent damage, or for any loss of income, which may arise after use of the information contained herein.

### Liability disclaimer

The hardware and/or software was created and tested by Hilscher Gesellschaft für Systemautomation mbH with utmost care and is made available as is. No warranty can be assumed for the performance or flawlessness of the hardware and/or software under all application

conditions and scenarios and the work results achieved by the user when using the hardware and/or software. Liability for any damage that may have occurred as a result of using the hardware and/or software or the corresponding documents shall be limited to an event involving willful intent or a grossly negligent violation of a fundamental contractual obligation. However, the right to assert damages due to a violation of a fundamental contractual obligation shall be limited to contract-typical foreseeable damage.

It is hereby expressly agreed upon in particular that any use or utilization of the hardware and/or software in connection with

- Flight control systems in aviation and aerospace;
- Nuclear fusion processes in nuclear power plants;
- Medical devices used for life support and
- Vehicle control systems used in passenger transport

shall be excluded. Use of the hardware and/or software in any of the following areas is strictly prohibited:

- For military purposes or in weaponry;
- For designing, engineering, maintaining or operating nuclear systems;
- In flight safety systems, aviation and flight telecommunications systems;
- In life-support systems;
- In systems in which any malfunction in the hardware and/or software may result in physical injuries or fatalities.

You are hereby made aware that the hardware and/or software was not created for use in hazardous environments, which require fail-safe control mechanisms. Use of the hardware and/or software in this kind of environment shall be at your own risk; any liability for damage or loss due to impermissible use shall be excluded.

### Warranty

Hilscher Gesellschaft für Systemautomation mbH hereby guarantees that the software shall run without errors in accordance with the requirements listed in the specifications and that there were no defects on the date of acceptance. The warranty period shall be 12 months commencing as of the date of acceptance or purchase (with express declaration or implied, by customer's conclusive behavior, e.g. putting into operation permanently).

The warranty obligation for equipment (hardware) we produce is 36 months, calculated as of the date of delivery ex works. The aforementioned provisions shall not apply if longer warranty periods are mandatory by law pursuant to Section 438 (1.2) BGB, Section 479 (1) BGB and Section 634a (1) BGB [Bürgerliches Gesetzbuch; German Civil Code] If, despite of all due care taken, the delivered product should have a defect, which already existed at the time of the transfer of risk, it shall be at our discretion to either repair the product or to deliver a replacement product, subject to timely notification of defect.

The warranty obligation shall not apply if the notification of defect is not asserted promptly, if the purchaser or third party has tampered with the products, if the defect is the result of natural wear, was caused by unfavorable operating conditions or is due to violations against our operating regulations or against rules of good electrical engineering



practice, or if our request to return the defective object is not promptly complied with.

### **Costs of support, maintenance, customization and product care**

Please be advised that any subsequent improvement shall only be free of charge if a defect is found. Any form of technical support, maintenance and customization is not a warranty service, but instead shall be charged extra.

### **Additional guarantees**

Although the hardware and software was developed and tested in-depth with greatest care, Hilscher Gesellschaft für Systemautomation mbH shall not assume any guarantee for the suitability thereof for any purpose that was not confirmed in writing. No guarantee can be granted whereby the hardware and software satisfies your requirements, or the use of the hardware and/or software is uninterrupted or the hardware and/or software is fault-free.

It cannot be guaranteed that patents and/or ownership privileges have not been infringed upon or violated or that the products are free from third-party influence. No additional guarantees or promises shall be made as to whether the product is market current, free from deficiency in title, or can be integrated or is usable for specific purposes, unless such guarantees or promises are required under existing law and cannot be restricted.

### **Confidentiality**

The customer hereby expressly acknowledges that this document contains trade secrets, information protected by copyright and other patent and ownership privileges as well as any related rights of Hilscher Gesellschaft für Systemautomation mbH. The customer agrees to treat as confidential all of the information made available to customer by Hilscher Gesellschaft für Systemautomation mbH and rights, which were disclosed by Hilscher Gesellschaft für Systemautomation mbH and that were made accessible as well as the terms and conditions of this agreement itself.

The parties hereby agree to one another that the information that each party receives from the other party respectively is and shall remain the intellectual property of said other party, unless provided for otherwise in a contractual agreement.

The customer must not allow any third party to become knowledgeable of this expertise and shall only provide knowledge thereof to authorized users as appropriate and necessary. Companies associated with the customer shall not be deemed third parties. The customer must obligate authorized users to confidentiality. The customer should only use the confidential information in connection with the performances specified in this agreement.

The customer must not use this confidential information to his own advantage or for his own purposes or rather to the advantage or for the purpose of a third party, nor must it be used for commercial purposes and this confidential information must only be used to the extent provided for in this agreement or otherwise to the extent as expressly authorized by the disclosing party in written form. The customer has the right, subject to the obligation to confidentiality, to disclose the terms and conditions of this agreement directly to his legal and financial consultants as would be required for the customer's normal business operation.

**Export provisions**

The delivered product (including technical data) is subject to the legal export and/or import laws as well as any associated regulations of various countries, especially such laws applicable in Germany and in the United States. The products / hardware / software must not be exported into such countries for which export is prohibited under US American export control laws and its supplementary provisions. You hereby agree to strictly follow the regulations and to yourself be responsible for observing them. You are hereby made aware that you may be required to obtain governmental approval to export, reexport or import the product.

## **1.3 Registered Trademarks**

Windows® XP, Windows® Vista, Windows® 7, Windows® 8, Windows® 8.1 and Windows® 10 are registered trademarks of Microsoft Corporation.

Sercos and Sercos interface are registered trademarks of Sercos international e. V., Suessen, Germany.

All other mentioned trademarks are property of their respective legal owners.

## **1.4 About Generic Sercos Slave DTM**

You can use the Sercos generic Slave DTM to configure the Sercos Slave devices described with SDDML files within a FDT Framework.

The information necessary for the configuration of the Sercos Slave devices is stored within the Sercos Master device when using the Sercos generic Slave DTM and thus the Master device is configured.

## 1.4.1 Requirements

### System Requirements

- PC with 1 GHz processor or higher
- Windows® XP SP3,  
Windows® Vista (32 bit) SP2,  
Windows® 7 (32 bit und 64-Bit) SP1,  
Windows® 8 (32-Bit und 64-Bit),  
Windows® 8.1 (32-Bit und 64-Bit),  
Windows® 10 (32-Bit und 64-Bit)
- Administrator privilege required for installation
- Internet Explorer 5.5 or higher
- RAM: min. 512 MByte, recommended 1024 MByte
- Graphic resolution: min. 1024 x 768 pixel
- Keyboard and Mouse
- Restriction: Touch screen is not supported.



**Note:** If the project file is used on another PC,

- the other PC must also comply to these system requirements,
- the device description files of the devices used in the project must be imported to the configuration software SYCON.net on the other PC,
- respectively the DTMs of the devices used in the project must be installed on the other PC.

### Requirements Sercos Generic Slave DTM

Requirements for working with the Sercos generic Slave DTM are:

- Installed FDT/DTM V 1.2 compliant frame application
- Installed Sercos Master DTM
- SDDML file of the devices to be configured
- The user needs to reload the Device Catalog

### Loading SDDML files

To add devices to the **netDevice** device catalog, you must import the SDDML file of the used device via **netDevice** menu **Network > Import Device Descriptions** .... into the SDDML folder of the DTM. Then the Device Cataloge must be reloaded. The folder SDDML inclusively Windows® XP is located in the application data directory (All Users) of the configuration software (or from with Windows® 7 on in the *C:\ProgramData\SYCONnet* directory).



For further information refer to section *Configuration Steps* on page 17 , under step 1 and 2.

## 1.5 Dialog Structure of the Generic Sercos Slave DTM

The graphical user interface of the DTM is composed of different areas and elements listed hereafter:

1. A header area containing the **General Device Information**,
2. The **Navigation Area** (area on the left side),
3. The **Dialog Pane** (main area on the right side),
4. **OK, Cancel, Apply, Help**,
5. The **Status Line** containing information e. g. the online-state of the DTM.

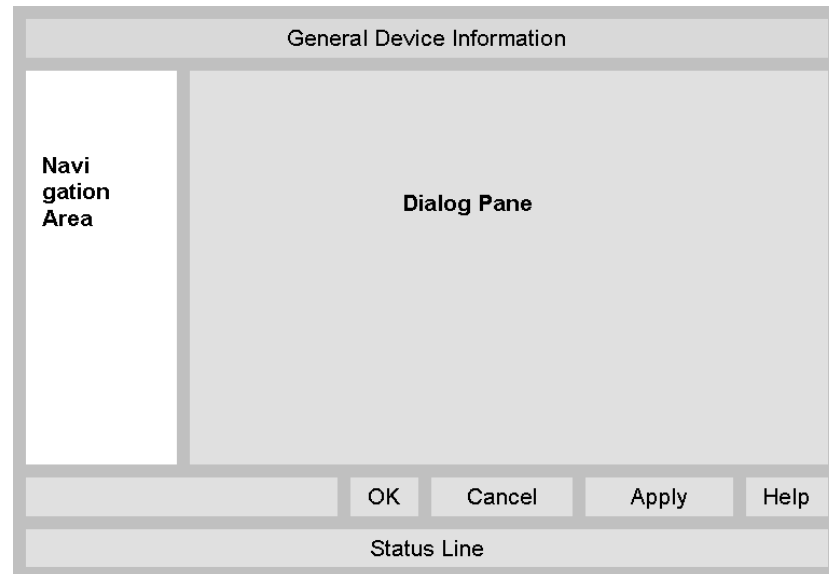


Figure 1: Dialog Structure of the Generic Sercos Slave DTM

## 1.5.1 General Device Information

Parameter	Meaning
IO Device	Name of the device
Vendor	Vendor name of the device
Device ID	Identification string of the device
Vendor ID	Identification number of the vendor

Table 2: General Device Information

## 1.5.2 Navigation Area

The **Navigation Area** contains folders and subfolders to open the dialog panes of the DTM.

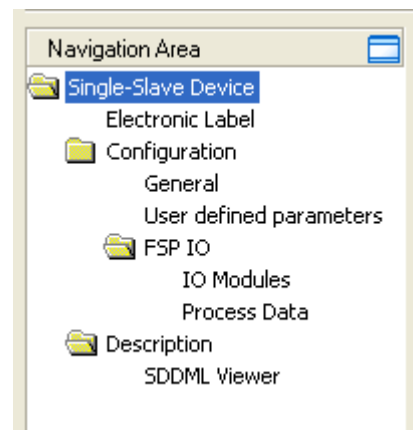


Figure 2: Navigation Area

- To access a DTM dialog pane select the respective item of the navigation tree structure.
- Select the required folder and subfolder.
- The corresponding Dialog pane is displayed.

### Hide / display Navigation

	Hiding the navigation area (above right side).
Show navigation area	<b>Opening</b> the navigation area (below left side).

### 1.5.3 Dialog Panes

At the dialog pane the **Configuration** or the **Device Description** (offline /online) panes are opened via the corresponding folder in the navigation area.

<b>Configuration (offline)</b>	
Support for Multi-Slave Devices	Here you can see how to select a Slave within devices supporting multiple Slaves. See section <i>Support for Multi-Slave Devices</i> on page 19.
Electronic Label	At the <b>Electronic Label</b> pane all information about the device which has been stored in the electronic label can be displayed. More information on this topic is available in section <i>Electronic Label</i> on page 22 .
General	At the <b>General</b> pane the current Station Address of the Slave device is displayed. Further information to this you find in section <i>General</i> on page 26 .
User-defined Parameters	The <b>User-defined Parameters</b> pane displays information on the <b>IDN</b> parameter sets of different communication phases. See section <i>User-defined Parameters</i> on page 28.
FSP IO	The <b>FSP IO</b> pane allows it to change the parameter settings of the modules. This window is only present if supported by the device profile. You find a detailed description in section <i>FSP IO</i> on page 36.
FSP Drive	At the <b>FSP Drive</b> pane you can access inputs and outputs. This window is only present if supported by the device profile. It is described in detail in section <i>FSP Drive</i> on page 51.
<b>Configuration (online)</b>	
<a href="#">Online Parameterization</a>	The <b>Online Parameterization</b> window is divided in two parts. The upper part of the window is described in section <i>Upper Part of Dialog Pane 'Online Parameterization'</i> on page 65. The lower part of the window is described in section <i>Lower Part of Dialog Pane</i> at page 72.
<b>Device Description</b>	
SDDML	By use of the <b>SDDML-Viewer</b> a SDDML file can be searched through. Further information on this you find in section <i>Device Description</i> on page 60.

Table 3: Overview Dialog Panes

## 1.5.4 OK, Cancel, Apply and Help

**OK, Cancel, Apply and Help** you can use as described hereafter.

	Meaning
<b>OK</b>	To confirm your latest settings, click <b>OK</b> . All changed values will be applied on the frame application database. <i>The dialog then closes.</i>
<b>Cancel</b>	To cancel your latest changes, click <b>Cancel</b> . Answer to the safety query <b>Configuration data has been changed. Do you want to save the data?</b> by <b>Yes</b> , <b>No</b> or <b>Cancel</b> . <b>Yes:</b> The changes are saved or the changed values are applied on the frame application database. <i>The dialog then closes.</i> <b>No:</b> The changes are <u>not</u> saved or the changed values are not applied on the frame application database. <i>The dialog then closes.</i> <b>Cancel:</b> <i>Back to the DTM.</i>
<b>Apply</b>	To confirm your latest settings, click <b>Apply</b> . All changed values will be applied on the frame application database. <i>The dialog remains opened.</i>
<b>Help</b>	To open the DTM online help, click <b>Help</b> .

Table 4: OK, Cancel, Apply and Help

## 1.5.5 Table Lines

In the DTM dialog pane table lines can be selected, inserted or deleted.

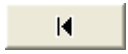
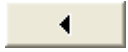

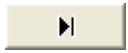


	Meaning
	To select the first line of a table use <b>First Line</b> .
	To select the previous line of a table use <b>Previous Line</b> .
	To select the next line of a table use <b>Next Line</b> .
	To select the last line of a table use <b>Last Line</b> .
	<b>Create a new Line</b> inserts new lines into the table.
	<b>Delete selected Line</b> deletes the selected line from the table.

Table 5: Selecting, inserting, deleting Table Line

## 1.5.6 Status Bar

The **Status Bar** displays information about the current state of the DTM. The current activity, e.g. the DTM connection state, is signaled graphically via icons in the status bar.

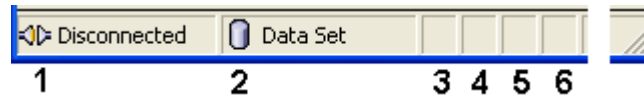


Figure 3: Status Bar – Status Fields 1 to 6






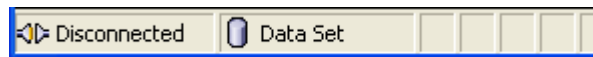
Status Field	Icon / Meaning	
1	<b>DTM Connection States</b>	
		<b>Connected:</b> Icon closed = Device is online
		<b>Disconnected:</b> Icon opened = Device is offline
2	<b>Data Source States</b>	
		<b>Data set:</b> The displayed data are read out from the instance data set (database).
		<b>Device:</b> The displayed data are read out from the device.
3	<b>States of the instance Date Set</b>	
		<b>Valid Modified:</b> Parameter is changed (not equal to data source).

Table 6: Status Bar Icons [1]

Offline State



Online State

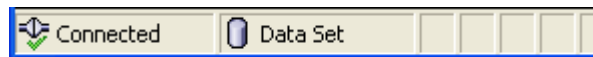


Figure 4: Status Bar Display Example





#	Step	Short Description	For detailed information see section	Page
7	Configure Slave <b>Online Parameterization</b>	Configure the Slave device. - Select the device icon of the Slave and select entry <b>Online Parameterization</b> in context menu - The Slave DTM configuration dialog is displayed. In the Slave DTM configuration dialog: - select the desired configuration , - close the Slave DTM configuration dialog via the button <b>OK</b> .		
8	Disconnect	Depending of the FDT Container. For netDevice: - right click to the device icon of the Slave, - select <b>Disconnect</b> .	<i>Connecting/Disconnecting Device</i>	80
9	Configuration Steps Master device	Configure the Master device via Sercos Master DTM.	<i>(See Operating Instruction Manual DTM for Sercos Master devices)</i>	-
10	Save project	Depending of the frame application. For the configuration software: - select <b>File &gt; Save</b> .	<i>(See Operating Instruction Manual of the Frame Application)</i>	-

Table 7: Getting started - Configuration Steps

## 3 Offline Parameterization

### 3.1 Support for Multi-Slave Devices

Device configuration is done by first clicking at the device in the netDevice frame with the right mouse button and afterwards selecting option “**Configuration->Offline Parameterize**” on the menu appearing then.

The Sercos generic Slave DTM supports Multi-Slave Devices with multiple Slaves within one single device.

The information that will be displayed at the top of the navigation area will depend on the number of Slaves integrated within the IO Device.

If the device contains only one single Slave (for instance, a compact IO device), at the top level of the navigation pane there will be an entry “**Single-Slave Device**”

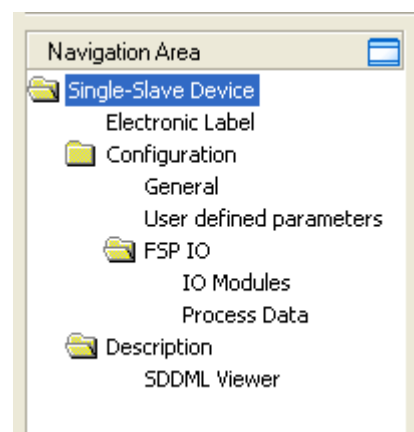


Figure 5: Navigation Area for Single-Slave Devices

The corresponding dialog pane for a single Slave device looks like:

Figure 6: Dialog Pane - Single-Slave Device

Contrary to this, for a multi-Slave device, in the topmost line there will be written “**Device with x Slaves**” where x is the number of Slaves of the device. It must be at least 2.

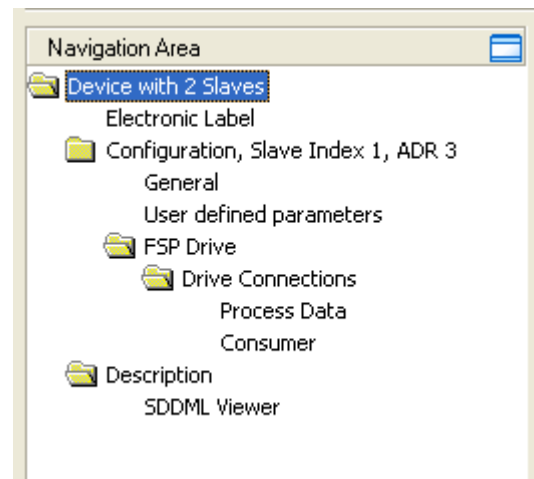


Figure 7: Navigation Area for Multi-Slave Devices

There is another difference compared to the single Slave device: In the third line, the entry “*Configuration*” is extended by the index and address of the Slave having been selected.

Selection of the Slave device to parameterize in devices containing multiple Slaves is done by the Slave selection combo box appearing in the Devices with x Slaves window, see figure below:

Figure 8: Dialog Pane - Multi-Slave Device - Slave Selection

In the example above, it is possible to choose between a Slave with index 0 at address 2 and a Slave with index 1 at address 3.

The following items are displayed in the dialog pane both in the single-Slave and the multi-Slave case:

Name	Meaning
Description	Contains a description of the device
Component name	Contains the name of the component
Device name	Contains the name of the device

Table 8: Contents of Dialog Pane Single Slave Device /Multi Slave Device

## 3.2 Setting Slave Parameters - Offline Configuration

The following steps are needed to set the Slave device parameters using the Sercos generic Slave DTM:

### Electronic Label

1. Check device specific information about the Sercos Slave:
  - Select **Electronic Label** in the navigation area.
  - The screen “**Electronic Label**” is displayed. Check for correctness of displayed information, if necessary.

### General

2. Check general information about Sercos Slave:
  - Select **Configuration > General** in the navigation area.
  - The screen “**General**” is displayed. It contains valuable information such as the Sercos Address of the device and whether fixed or variable configuration is used.

### User-defined Parameters

3. Set user-defined parameters of the device:
  - Select **Configuration > User-defined Parameters** in the navigation area.

### Special Parameters for FSP IO Devices

4. Only in case of an FSP IO Device:
  - Set some essential parameters for FSP IO Devices.
  - Select **Configuration > FSP IO** in the navigation area.

### Special Parameters for FSP Drives

5. Only in case of an FSP Drive:
  - Set some essential parameters for FSP Drives:
  - Select **Configuration > FSP Drive** in the navigation area.

### Close Generic Slave-DTM configuration dialog

- Click at **OK** in order to close the generic Slave-DTM configuration dialog and to store your chosen configuration.

### Further Information



For more information according to the required steps for the offline configuration refer to the sections *Electronic Label* on page 21, *General* on page 26, *User-defined Parameters* on page 28, *FSP IO* on page 36 and *FSP Drive* on page 51.

### 3.3 Electronic Label

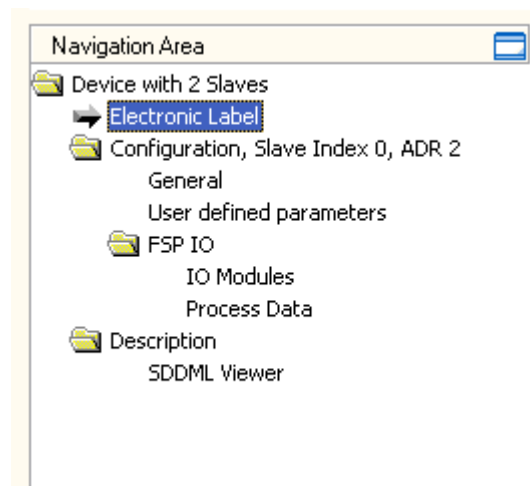


Figure 9: Navigation Area - Electronic Label

The menu entry **Configuration > Electronic Label** is available at all Sercos generic Slave modules independently of being a FSP IO or FSP Drive module. It reflects the “Electronic Label” of the Sercos device as defined in IDN S-0-1300 according to the specification of Sercos in the third generation.

Electronic Label	
<input type="checkbox"/> Vendor ID	100
<input type="checkbox"/> Device ID	R911170874
<input type="checkbox"/> Vendor name	Rexroth
<input type="checkbox"/> Component name	SERCOS III Block IO Analog
<input type="checkbox"/> Revision	4
<input type="checkbox"/> Hardware revision	
<input type="checkbox"/> Software revision	
<input type="checkbox"/> Firmware loader revision	
<input type="checkbox"/> Serial number	170874-000001

Figure 10: Configuration > Electronic Label

The following items are displayed:

Name	Meaning
Vendor ID	Vendor Code as defined in IDN S-0-1300.x.03
Device ID	Device ID as defined in IDN S-0-1300.x.05
Vendor name	Vendor name as defined in IDN S-0-1300.x.02
Component name	Component name as defined in IDN S-0-1300.x.01
Revision	Revision as defined in IDN S-0-1300.x.07
Hardware revision	Hardware revision as defined in IDN S-0-1300.x.08
Software revision	Software revision as defined in IDN S-0-1300.x.09
Firmware loader revision	Firmware loader revision as defined in IDN S-0-1300.x.10
Serial number	Serial number as defined in IDN S-0-1300.x.12

Table 9: Device > Electronic Label

For each item an associated check button can be checked (located at the most left part of the window):

If this button is checked, the Master will check this item for correctness, otherwise the Master will assume the correctness without performing a check.

- The Vendor ID is a 16 bit wide unique code introduced for identification of devices within the Sercos network.
- If the value differs from 0, the device comes from a registered vendor which has been assigned to that code by Sercos international.
- If the value is 0, the device comes from an unregistered vendor.
- The Device ID is a unique string managed by the vendor for separating the various types of devices the vendor offers.
- The component name contains the name of the device as it would for instance be published in vendors price list.
- The revision is an integer numeric value (16 bit) which should be incremented each time when there is a significant change in the function of the device (i.e. a functional correction of the device).
- The hardware revision identifies the version number of the hardware of the device. This value is specified by the manufacturer.
- The software revision identifies the version number of the software or firmware of the device. This value is specified by the manufacturer.
- The firmware loader revision identifies the version number of the firmware loader which may be contained in the device. This value is specified by the manufacturer.
- The serial number. It identifies the unique number of the individual device which has been assigned to the device at the manufacturer.

## 3.4 Overview Configuration

### Dialog Panes “Configuration”

The table below gives an overview about the available **Configuration** dialog panes descriptions:

Section	Subsection	Manual Page
Configuration	General	26
	User-defined Parameters	28
	FSP IO	36
	IO Modules	37
	Process Data	49
	FSP Drive	51

Table 10: Dialog Panes Configuration

The Sercos device model covers drives, IO devices and hybrid devices whereas the latter is the combination of drive and IO.

- Sercos drive implements FSP Drive according to specification “*Function Specific Profile Drives V1.1.2.11*”
- Sercos IO device implements FSP IO according to specification “*Function Specific Profile IO V1.1.2.1.3*,”
- Sercos hybrid device implements both FSP Drive and FSP IO.

For FSP IO devices, the **Configuration** dialog pane looks like:

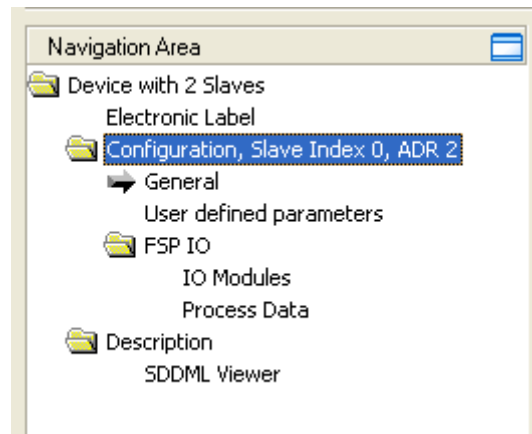


Figure 11: Navigation Area - Configuration for FSP IO Modules



For drives according to FSP Drive, the **Configuration** dialog pane appears like:

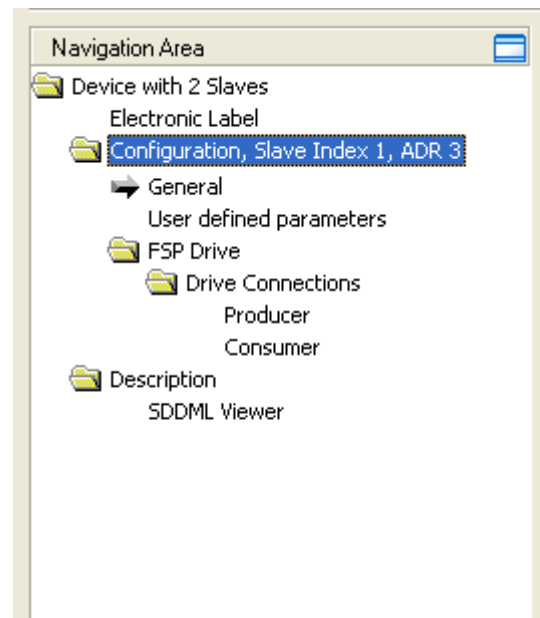


Figure 12: Navigation Area - Configuration for FSP Drive Modules

In both example figures a device with 2 Slaves has been used. There would be no difference except the top level entry, if a single Slave device would have been used.

### 3.5 General

**General**

sercos address:

☐ Optional

☒ VarCfg

☐ Hotplug

☐ NRT

List of SCP classes and version

Klassename	Version
SCP_VarCFG	1

OK Cancel Apply Help

Figure 13: Configuration > General

On a single Slave device the headline is only “General”, on a device with multiple Slaves additionally index and address of the selected Slave are stated there.

The menu entry **Configuration > General** is available at all Sercos generic Slave modules independently of being a FSP IO or FSP Drive module.

The following items are displayed:

Name	Meaning
Sercos address	Contains the Sercos address

Table 11: Configuration > General

The following checkboxes are present:

*Optional:*

indicates that the item is optional and may be omitted.

*VAR\_CFG:*

indicates that variable configuration is allowed (i.e. the user may at least partly change the configuration originating from the SDDML file of the device).

*Hotplug*

Indicates whether the device is capable of hotplugging. This checkbox cannot be edited.

*NRT*

Indicates whether the device supports non-real-time communication by providing an NRT channel. This checkbox cannot be edited.

Furthermore a list of the applied SCP Classes and their version is displayed on this pane. In the example, the device supports SCP Class *SCP\_VarCfg* in version 1.

### 3.6 User-defined Parameters

This dialog pane displays information on the IDN parameter sets of different communication phases.

Parameter list for: CP2

IDN	Action	Format	Data Length	Value	Mask
S-0-1050.0.1	WR	Unsigned decimal	2 octet	49168	
S-0-1050.0.5	WR	Unsigned decimal	2 octet	6	
S-0-1050.0.10	WR	Unsigned decimal	4 octet	2000000	
S-0-1503.0.7	WR	Unsigned decimal	2 octet	2	
S-0-1502.0.3	WR	Unsigned decimal	2 octet	2	

Existing data

Show standard parameters Select entry

IDN	Format	Data Length	Name	Min. Value	Max. Value	Value	Unit	CP
S-0-1050.0.6	IDN	4 octet list	Configuration List			S-0-1500.0.2;S-0-1500.0.9		2; 3; 4
S-0-1050.0.10	Unsigned dk 4 octet		Producer Cycle Time			2000000		2; 3; 4
Structure Instance 1								
S-0-1050.1.1	Unsigned dk 2 octet		Connection setup			32784		2; 3; 4
S-0-1050.1.5	Unsigned dk 2 octet		Actual Length of Connection			6		2; 3; 4
S-0-1050.1.6	IDN	4 octet list	Configuration List			S-0-1500.0.1;S-0-1500.0.5		2; 3; 4
S-0-1050.1.10	Unsigned dk 4 octet		Producer Cycle Time			2000000		2; 3; 4
S-0-1050.1.11	Unsigned dk 2 octet		Allowed Data Losses			1		2; 3; 4
S-0-1502								
Structure Instance 0								
S-0-1502.0.2	Unsigned dk 2 octet		Channel Amount PROUT			2		2; 3; 4

OK Cancel Apply Help

Figure 14: User-defined Parameters Dialog Pane

This dialog pane mainly consists of two tables:

The upper table contains a list of parameters that are set during CP2, CP3 or CP4.

The contents of the upper table depends on the choice of the combo box just above the table (which offers CP2, CP3 and CP4 as alternatives).

The lower table is described in section 'Columns of the lower Tree-List Grid' on page 34.

### 3.6.1 Columns of upper Table

The columns within the upper table have the following meaning:

#### *IDN*

This column identifies the IDN (including Structure Index and Structure Element) to be processed in CP2, CP3 or CP4.

#### *Action*

Here the action to be performed with the IDN has to be specified. The choice between three alternatives is offered here:

Action code	Performed action
WR	Write
RDCMP	Read and compare
EXEC	Execution of Procedure Command

Table 12: Possible Actions to be performed with chosen IDN

#### *Format*

This column contains the information about the data type of the data associated with the IDN. The possible data types available for your choice are:

- Binary
- Unsigned decimal
- Signed decimal
- Hex
- Text
- IDN
- Float

#### *Data Length*

This column contains the length of the data associated with the IDN.

Possible values are:

- 2 Octets
- 4 Octets
- 8 Octets
- 1 Octet List
- 2 Octet List
- 4 Octet List
- 8 Octet List



**Note:** An octet corresponds to a byte in this context.

Not all combinations may be applied. The following table shows which combinations may be chosen:

Data type	2 Octets	4 Octets	8 Octets	1 Octet List	2 Octet List	4 Octet List	8 Octet List
Binary	X	X	X		X	X	x
Unsigned decimal	X	X	X	X	X	X	X
Signed decimal	X	X	X		X	X	X
Hex	X	X	X	X	X	X	X
Text				x			
IDN	X	X			X	X	
Float		X	X			X	X

Table 13: Allowed Data Length Value in Dependence of Format/Data Type

An incorrect choice of the data length which does not match with the selected value of *Format* will be marked with a red exclamation mark in the cell where the incorrect choice was made. This looks like:

 1 octet list

#### Value

This column contains

- The value to be written into the IDN (in case of *Action code* = *WR*, see below)
- The value to be compared with the contents of the IDN (in case of *Action code* = *RDCMP*, see below)
- In case of *Action code* = *EXEC*, there is no need to fill in a value here.



The allowed input to be specified in column 'value' depends on the values specified in columns '*Format*' and '*Data Length*' according to the rules subsequently described in subsection *Rules for Input in Column 'Value' of upper Table* on page 32 of this document.

If the value put in here is not compatible with the values specified at *Format* and *Data Length*, this will be indicated by

 Undefined

You should then fill in a correct value.

For an explanation of the navigation buttons see section "*Table Lines*" of this document.

If data cells have been recognized as faulty (marked with a red exclamation mark such as  1 octet list) or not sufficiently precise (such as  Undefined), a more precise error description can be obtained via „tool tip“.

- In order to obtain a detailed problem or error description, move the cursor of the mouse to the according problem or error icon, for which you want to have an explanation. Please wait for about a second.

 The desired explanation appears at the location of the cursor.

#### Mask

Here an applicable mask can be displayed. This column is not editable.

### 3.6.2 Rules for Input in Column ‘Action’ of upper Table

EXEC is applicable only in case the IDN contains a Procedure Command. On the other hand, WR and RDCMP are applicable only if the IDN does not contain a Procedure Command. The following Sercos IDNs are assigned to a procedure command:

IDN	Name (abbreviation)
S-0-0099	Reset class 1 diagnostic
S-0-0127	CP3 transition check
S-0-0128	CP4 transition check
S-0-0139	Park axis procedure command
S-0-0146	Control unit controlled homing procedure command
S-0-0148	Drive controlled homing procedure command
S-0-0149	Positive stop drive procedure command
S-0-0152	Position spindle procedure command
S-0-0170	Probing cycle procedure command
S-0-0171	Calculate displacement procedure command
S-0-0172	Displacement to the referenced system procedure command
S-0-0190	Drive controlled gear engaging procedure command
S-0-0191	Cancel reference point procedure command
S-0-0197	Set coordinate system procedure command
S-0-0199	Shift coordinate system procedure command
S-0-0216	Switch parameter set procedure command
S-0-0223	Drive controlled synchronous operation procedure command
S-0-0262	Load defaults procedure command
S-0-0263	Load working memory procedure command
S-0-0264	Backup working memory procedure command
S-0-0276	Return to Module range procedure command
S-0-0293	Selectively backup working memory procedure command
S-0-0420	Activate parameterization level 1 procedure command (PL1)
S-0-0422	Exit parameterization level procedure command
S-0-0447	Set absolute position procedure command
S-0-1024	SYNC delay measuring procedure command

Table 14: List of commonly available Procedure Commands

Additional IDNs assigned to procedure commands may also be contained in Sercos profiles. For more information refer to the documentation of all Sercos profiles you use.

- Use action code EXEC only with IDNs mentioned in *Table 14: List of commonly available Procedure Commands* on page 31 and with those IDNs which have been defined by Sercos Profiles and relate to procedure commands (according to the profile specification).
- Use action codes WR and RDCMP only with IDNs not mentioned in *Table 14: List of commonly available Procedure Commands* on page 31 and with those IDNs which have been defined by Sercos Profiles and do not relate to procedure commands (according to the profile specification).

### 3.6.3 Rules for Input in Column '*Value*' of upper Table

The following rules apply for input into the column '*Value*' of the upper table.

Rule for data type *Float*:

When working with floating point values, the integer part and the fractional part have to be separated by a decimal point, not by a comma.

1. Rule for data type *List*:

Single entries within list data types have to be separated by a semicolon.

2. Rule for input of single values

For all data types besides list data types, no data may be separated with a semicolon as a semicolon would be interpreted as an error in such a case.

3. Rule for input of binary values:

Values specified as *Binary* should also be represented in the binary format such as 10111000011100, for instance.

4. Rule for input of hexadecimal values:

Hexadecimal values can be specified with but also without a preceding „0x“ such as „222“. This will be interpreted as „0x222“.

5. Rule for input of decimal values:

Decimal values may not be specified in hexadecimal format. For instance, 0x1234 would cause an error.

6. Rule for input of IDN values:

IDN values must be specified only in the format [S/P]-X-XXXX or [S/P]-X-XXXX.X.X.

7. Rule for input of negative values:

Input of negative values (usage of minus sign) is only possible when using data type *Signed Decimal*.



---

**Note:**

Even syntactically correct entries may cause an error if one (or more) element(s) of these entries has(have) an incorrect data length.

---

The following error situations might occur:



### IDN Duplicate Error

If the same IDN is entered twice for the same communication phase, the following error message box will appear (example picture applies to CP2):

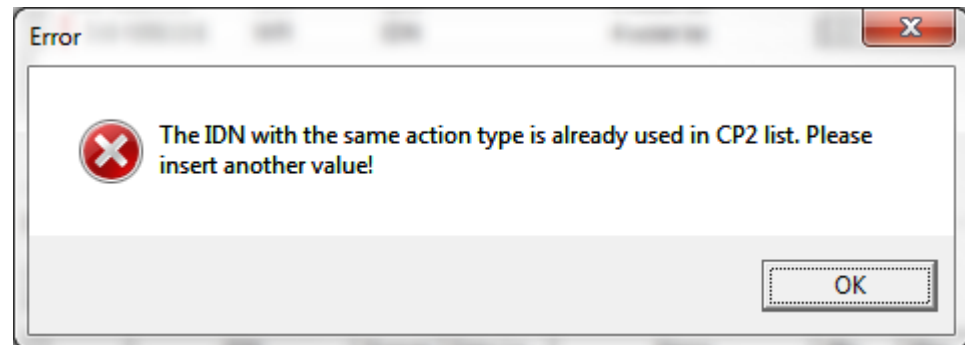


Figure 15: IDN Duplicate Error

Similarly, the message box will also appear for CP3 and CP4 instead of CP2 used in the example.

### IDN Format Error

At input of an IDN different from the given format, the following error message will appear:

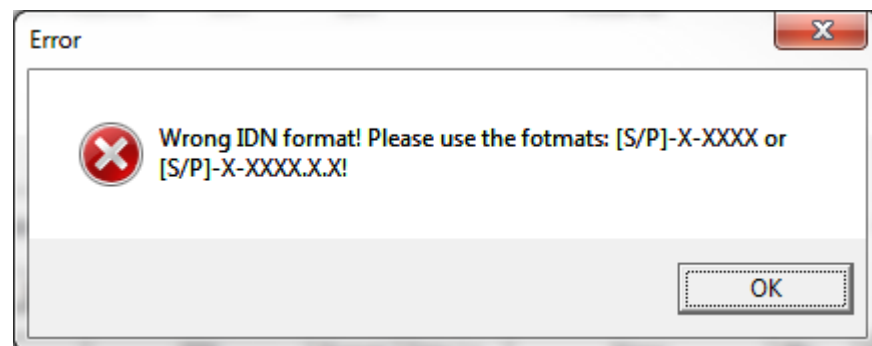


Figure 16: IDN Format Error

Correct the format error then!

### Common Error

If you try to store data although currently errors are indicated, the following message box will appear:

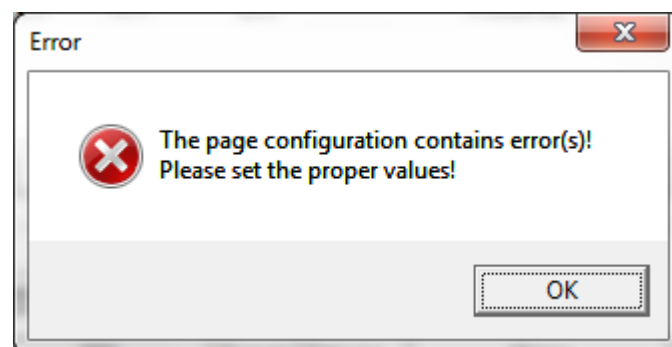




Figure 17: Common Error

In order to solve the problem, correct the errors indicated by  or  first!

### 3.6.4 Columns of the lower Tree-List Grid

The lower tree-list grid is used as tool for easily filling the upper table with standard data. It is not editable.

It contains representations of lists of proposed IDNs and their Structure Instances and Structure Elements:

At first, the lower tree-list grid contains nothing.

Clicking the button “*Show standard parameters*” right above the lower tree-list grid will fill the tree-list grid with a list of the applicable functions (structured by their IDNs, Structure Instance and Structure Element).

At the top of each such list, there is one line representing the entire IDN. In the first column there is a symbol allowing to expand or collapse the list of that IDN. Besides this column, there is only one column filled, namely the IDN column containing the complete denomination of the IDN.

Under each IDN list entry, you can find one or more *Structure Instance* entries. These also have a node symbol in the structure tree in the first column which again can be expanded or collapsed. (These node symbols are shifted a bit to the right compared to the node symbols of the IDN list entries.) Besides this column, there is only one column filled, namely the IDN column containing the text *Structure Instance* and the number of the Structure Instance.

Under each *Structure Instance* entry, you can find one or more *Structure Element* entries. Only these contain the relevant information to be selected and only for these the columns *Format*, *Data Length*, *Name*, *Min.Value*, *Max.Value*, *Value*, *Unit*, *CP* may be filled with data.

In order to transfer the data of a single *Structure Element* entry of the lower tree-list grid to the upper table for the currently chosen communication phase:

- either click the button “*Select entry*” , when the desired line of the lower tree-list grid is marked,
- or double click at the desired line of the lower tree-list grid.



**Note:** It is not allowed to select more than one single line in the lower tree-list grid.

The columns within the lower tree-list grid have the following meaning:

#### *IDN*

This column identifies the IDN (including Structure Index and Structure Element) of the function proposed in the current line. For FSP Drives, only structure instances and structure elements of IDN **S-0-1300** are available.

#### *Format*

This column contains the information about the data type of the data associated with the IDN. The possible data types allowed here are:

- Binary
- Unsigned decimal
- Signed decimal
- Hex

- Text
- IDN
- Float

#### *Data Length*

This column contains the length of the data associated with the IDN.

The possible data types that may appear here:

- 2 Octets
- 4 Octets
- 8 Octets
- 1 Octet List
- 2 Octet List
- 4 Octet List
- 8 Octet List



---

**Note:** An octet represents a byte in this context.

---

#### *Name*

This column contains a descriptive text for the function associated with the IDN.

#### *Min. Value*

If the range of allowed values for this IDN is restricted, this column contains the minimum allowed value.

#### *Max. Value*

If the range of allowed values for this IDN is restricted, this column contains the maximum allowed value.

#### *Value*

This column contains the stored standard value of the respective IDN originating from the SDDML file.

#### *Unit*

This column contains a unit associated with the value, if one has been specified.

#### *CP*

This column contains the numbers of the communication phases, when the respective IDN is applicable. Allowed values are 2, 3 and 4 denoting the communication phases CP2, CP3 and CP4.

## 3.7 FSP IO

In Sercos there are three kinds of IO devices according to the FSP IO specification (reference [7]):

- Compact IO Devices
- Modular IO Devices
- Hybrid IO Devices

A compact IO device contains one or more fixed IO functions, for instance a 16 bit digital input module could be considered to be a compact IO device. It is not structured into separate modules.

A modular IO device contains a complex or variable configurable device which is structured into separate modules.

A hybrid IO device combines an IO device with a drive.

A function group within a Sercos IO device is defined as a group of identical IO functions, such as a 16 bit digital input module or 4 bit analog output module. A function group is usually denominated like the associated IDN, see list below.

### *Example of a Compact IO Device*

For example, a compact device may contain 16 digital Outputs according to FG S-0-1502 and 16 digital Inputs according to FG S-0-1503. So the bus head includes the function groups FG S-0-1500, FG S-0-1502 and FG S-0-1503.

### *Example of a Modular IO Device*

For example, a modular device may contain

Module 1: 8 digital Outputs according to FG S-0-1502

Module 2: 16 digital Outputs according to FG S-0-1502

Module 3: 4 analog Inputs according to FG S-0-1505 and 4 analog outputs according to FG S-0-1504.

Module 4: 16 digital Inputs according to FG S-0-1503.

So the bus head includes exactly one function groups FG S-0-1500 and there are four modules with together 5 function groups. Module 3 contains 2 function groups (FG S-0-1505 and FG S-0-1504) while all other modules contain only one single function group (Module 1 and module 2: FG S-0-1502, Module 4: FG S-0-1503)

### 3.7.1 IO Modules

At the pane **IO Modules** compact or modular devices can be configured.

For instance, the figure displays the configuration of a device with digital input, digital output and bus coupler.

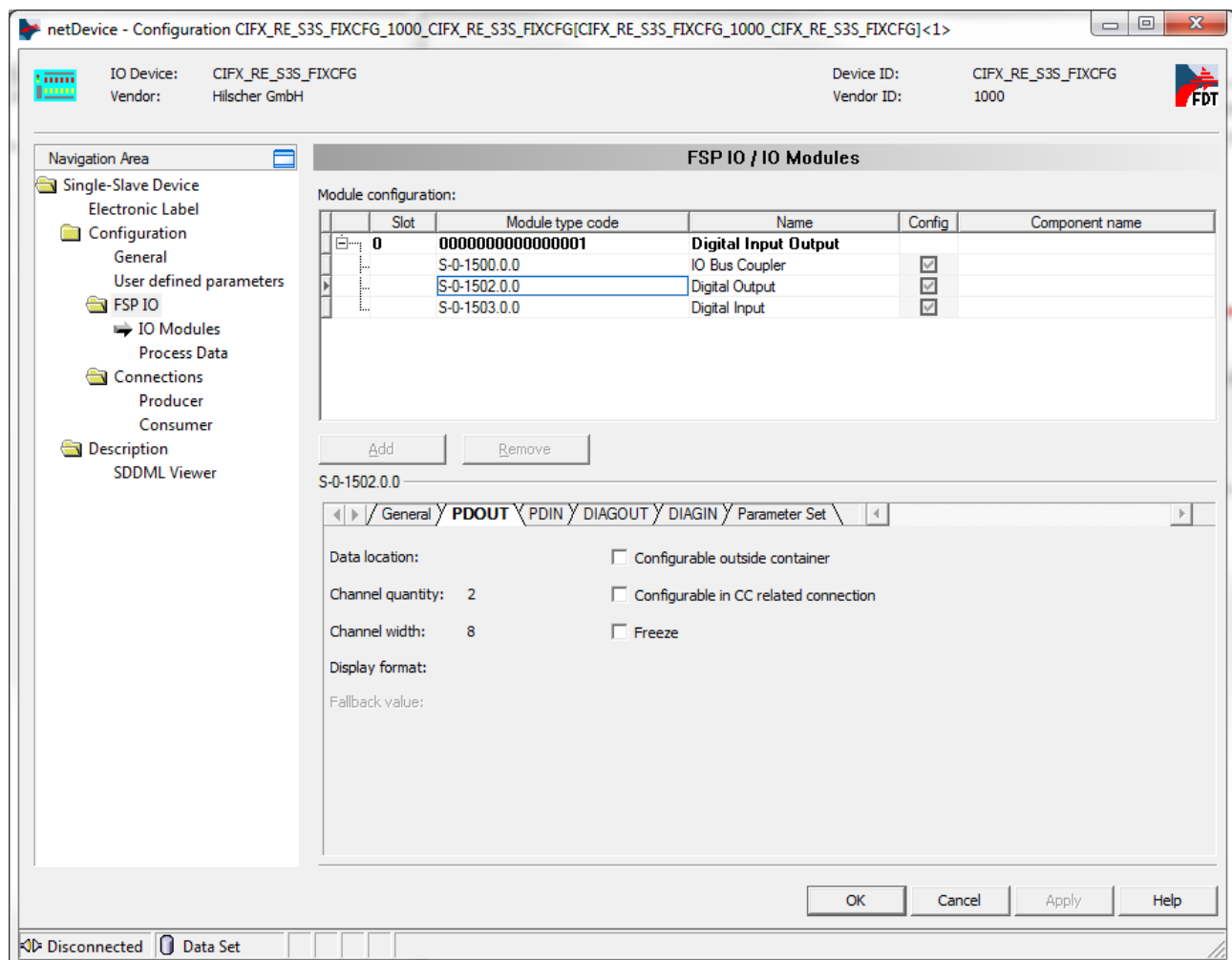


Figure 18: IO Modules Pane

#### Upper part

The upper part of the screen contains the module table, see section *IO Modules - Module Configuration Table* on page 39.

The buttons have the following meaning:

	Meaning
Add	A new slot is added in the configuration below the marked slot
Remove	The marked slot is being removed.

Table 15: Buttons for Slots in Module Configuration

The values of the slot numbers must be included in the range from 0 and 255. Each slot number can be assigned only once. For modular devices, this is already taken into account within the combo boxes opening when

clicking at the fields of column *Slot*. Thus, the choice of an already used slot number is prohibited.

Changes of the slot number immediately cause the list to be sorted again.

For modular IO devices, clicking at a field of column *Name* also opens a combo box allowing to change the module.

For compact IO devices there is no possibility to select any other numbers than the preselected slot numbers. There is also no possibility to change the module.

### **Lower part**

The contents of the lower part of the screen is a card register whose contents depends on:

- The module selected in the upper part of the screen (in the example: Digital Input IDN S-0-1503).
- The selected card of the card register

There are six register cards available:

- Register Card '*General*'
- Register Card '*PDIN*'
- Register Card '*PDOOUT*'
- Register Card '*DIAGIN*'
- Register Card '*DIAGOUT*'
- Register Card 'Parameter Set'

### 3.7.2 IO Modules - Module Configuration Table

The upper part of the screen displays the module configuration table:. Details may depend on whether the device is a compact or modular device.

Module configuration:

	Slot	Module type code	Name	Config	Component name
	0	00010000029402EE	75x-660, 8-channel PROFIs		
		S-0-1511.0.0	[Safety Input]	<input checked="" type="checkbox"/>	
	5	00000000000402EE	75x-400, 2DI, DC 24V, 3ms		
		S-0-1503.5.0	[Digital Input]	<input checked="" type="checkbox"/>	
	6	00000000000402EE	75x-402, 4DI, DC 24V, 3ms		
		S-0-1503.6.0	[Digital Input]	<input checked="" type="checkbox"/>	
	7	00000000019402EE	75x-404, single up/down co		
	8	00000000000502EE	75x-622, binary space		

Add Remove

S-0-1503.6.0

Figure 19: Configuration > Modules (Upper Part)

The meaning of the various columns is the following:

#### Slot

The slot number where the module is plugged (indicating the order of modules). The value 0 is reserved for the bus head. If a compact device is shown, there will be only slot 0 as it only consists of a bus head.

#### Module type code

A code uniquely assigned to a specific module type of the list in section *IO Modules* on page 37.. (Module type code relates only to the upper line.)

#### Name

The name of the module or function group associated with the selected row of the module configuration table.

#### Config

Boolean value indicating whether or not the function group is configured.

#### Component Name

The component name as defined in the Electronic Label.

The module configuration table is organized as follows:

- Each line, which is printed in **strong** and is not empty in the *Slot* column, represents an IO module in the sense of Sercos FSP IO.
- Each other line (no entry in slot column, normally printed) represents a single function group (such as *Digital Output* and *Digital Input* in the example) within the IO module mentioned in the strongly printed line above.

The following function groups are defined within the Sercos FSP IO specification (see reference 7):

IDN	Name of Function Group
S-0-1501	Unknown
S-0-1502	Digital Output
S-0-1503	Digital Input
S-0-1504	Analog Output
S-0-1505	Analog Input
S-0-1506	Counter
S-0-1507	Complex Protocol
S-0-1508	Sub bus Master
S-0-1509	Sub bus Slave
S-0-1510	Safety Output
S-0-1511	Safety Input
S-0-1512	Module-PLC
S-0-1513	Motor starter
S-0-1514	PWM
S-0-1515	Positioning
S-0-1516	Passive

Table 16: Available Function Groups for IO Modules



### 3.7.3 IO Modules - Register Card 'General'

This register card displays general information on the selected function group.



Figure 20: Configuration > Modules (Lower Part), Register Card 'General'

In detail, the following information is displayed:

- IDN of Function Group

The IDN assigned to a specific function group of the list in *Table 16: Available Function Groups for IO Modules* on page 40 as defined by the Sercos FSP IO specification.

- FG Name

The name of the function group associated with the selected line of the *IO Modules - Module Configuration Table* on page 39.

- IO Type

Here the IDN corresponding to the selected function group is listed. This is an IDN in the range between S-0-1501 and S-0-1516, see list in *Table 16: Available Function Groups for IO Modules* on page 40.

- Min delay time (μs)

This value represents the minimum configurable delay time. The value is optional, so it may be missing as in the example above.

- Max delay time (μs)

This value represents the maximum configurable delay time. The value is optional, so it may be missing as in the example above.

- Removable

The Boolean value indicates whether the function group is removable from a module.

If this value is true, then user is allowed to change the “config” flag of this function group upper Module Configuration Table. Please note that removable flag is only a configuration concept, a function group cannot be physically removed from a module.

### 3.7.4 IO Modules - Register Card '*PDIN*'

This register card displays information on the PDIN data area of the selected function group.

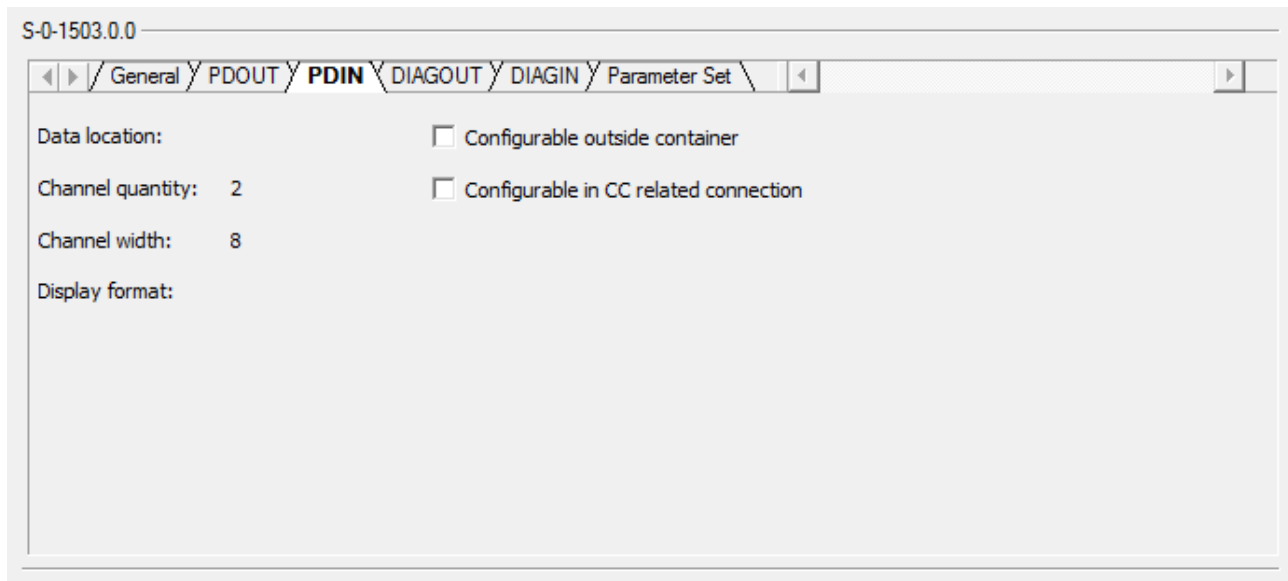


Figure 21: Configuration > Modules (Lower Part), Register Card '*PDIN*'

In detail, the following information is displayed:

- IDN of Function Group

The IDN assigned to a specific function group of the list in *Table 16: Available Function Groups for IO Modules* on page 40 as defined by the Sercos FSP IO specification.

- Data Location

In some cases, the data location of the IDN is displayed here.

- Channel quantity

This item is configured within the SDDML file of the device. It contains the number of channels of the Process Data Input PDIN.

- Channel width

This item is configured within the SDDML file of the device. It contains the number of bits within one channel of the Process Data Input PDIN.

- Display Format

In some cases, the display format of the IDN may be shown here.

- Configurable outside container

This Boolean value is configured within the SDDML file of the device. It indicates whether the device is also configurable outside of the input data container or not.

- Configurable in CC related connection

This Boolean value is configured within the SDDML file of the device. It indicates whether the device is also configurable in a connection related to cross communication.

### 3.7.5 IO Modules - Register Card 'PDOUT'

This register card displays information on the PDOUT data area of the selected function group.

S-0-1502.0.0

General PDOUT PDIN DIAGOUT DIAGIN Parameter Set

Data location: ☐ Configurable outside container

Channel quantity: 2 ☐ Configurable in CC related connection

Channel width: 8 ☐ Freeze

Display format:

Fallback value:

Figure 22: Configuration > Modules (Lower Part), Register Card 'PDOUT'

In detail, the following information is displayed:

- IDN of Function Group

The IDN assigned to a specific function group of the list in *Table 16: Available Function Groups for IO Modules* on page 40 as defined by the Sercos FSP IO specification.

- Data Location

In some cases, the data location of the IDN is displayed here.

- Channel quantity

This item is configured within the SDDML file of the device. It contains the number of channels of the Process Data Output PDOUT.

- Channel width

This item is configured within the SDDML file of the device. It contains the number of bits within one channel of the Process Data Output PDOUT.

- Configurable outside container

This Boolean value is configured within the SDDML file of the device. It indicates whether the device is also configurable outside of the output data container or not.

- Configurable in CC related connection

This Boolean value is configured within the SDDML file of the device. It indicates whether the device is also configurable in a connection related to cross communication.

If the selected item has no outputs, the register card 'PDOUT' is grayed out.

### 3.7.6 IO Modules - Register Card '*DIAGIN*'

This register card displays information on the *DIAGIN* data area of the selected function group.

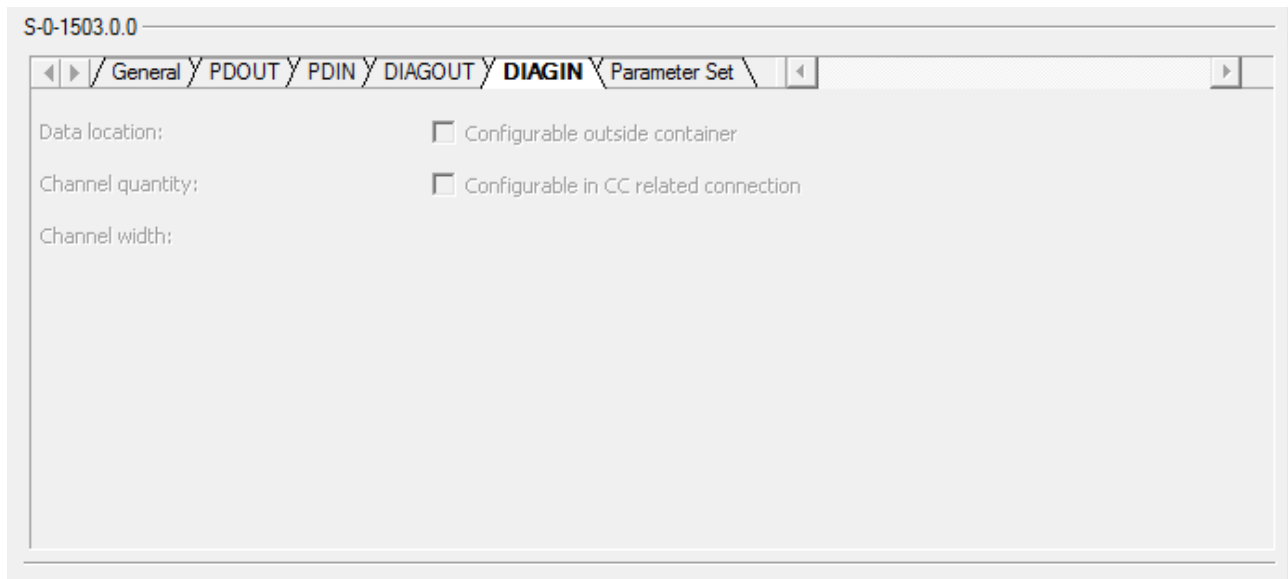


Figure 23: Configuration > Modules (Lower Part), Register Card '*DIAGIN*'

In detail, the following information is displayed:

- IDN of Function Group

The IDN assigned to a specific function group of the list in *Table 16: Available Function Groups for IO Modules* on page 40 as defined by the Sercos FSP IO specification.

- Data Location

In some cases, the data location of the IDN is displayed here.

- Channel quantity

This item is configured within the SDDML file of the device. It contains the number of channels of the Process Data Input *DIAGIN*.

- Channel width

This item is configured within the SDDML file of the device. It contains the number of bits within one channel of the Process Data Input *DIAGIN*.

- Configurable outside container

This Boolean value is configured within the SDDML file of the device. It indicates whether the device is also configurable outside of the input data container or not.

- Configurable in CC related connection

This Boolean value is configured within the SDDML file of the device. It indicates whether the device is also configurable in a connection related to cross communication.

### 3.7.7 IO Modules - Register Card '*DIAGOUT*'

This register card displays information on the DIAGOUT data area of the selected function group.

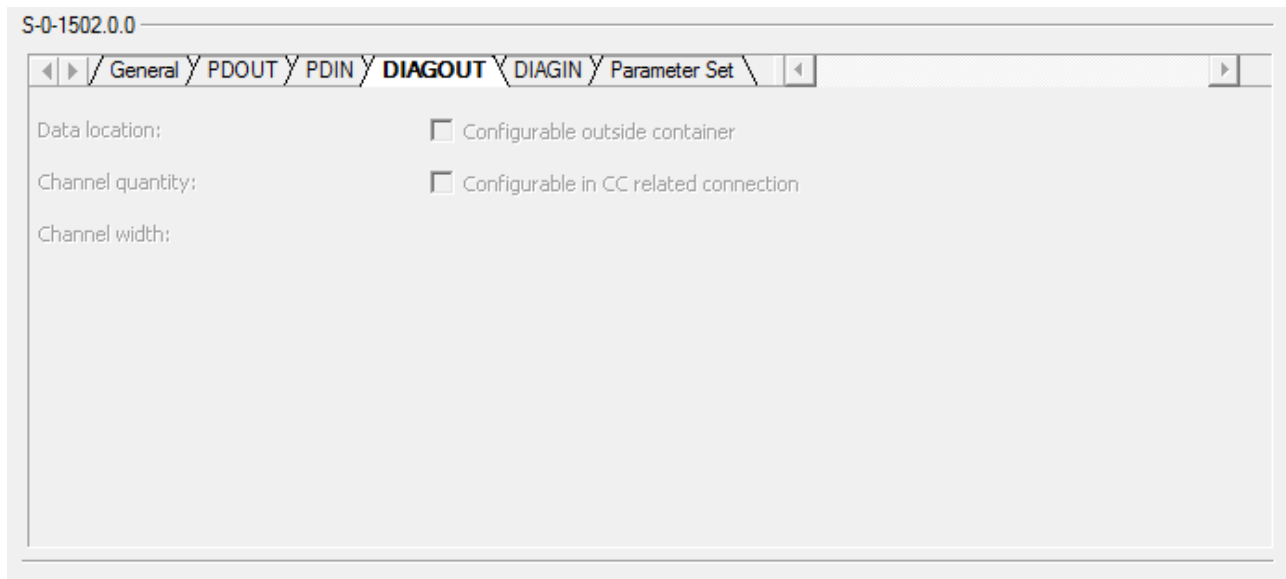


Figure 24: Configuration > Modules (Lower Part), Register Card '*DIAGOUT*'

In detail, the following information is displayed:

- IDN of Function Group

The IDN assigned to a specific function group of the list in *Table 16: Available Function Groups for IO Modules* on page 40 as defined by the Sercos FSP IO specification.

- Data Location

In some cases, the data location of the IDN is displayed here.

- Channel quantity

This item is configured within the SDDML file of the device. It contains the number of channels of the Process Data Output DIAGOUT.

- Channel width

This item is configured within the SDDML file of the device. It contains the number of bits within one channel of the Process Data Output DIAGOUT.

- Configurable outside container

This Boolean value is configured within the SDDML file of the device. It indicates whether the device is also configurable outside of the output data container or not.

- Configurable in CC related connection

This Boolean value is configured within the SDDML file of the device. It indicates whether the device is also configurable in a connection related to cross communication.

If the selected item has no outputs, the register card '*DIAGOUT*' is grayed out.

### 3.7.8 IO Modules - Register Card '*Parameter Set*'

This register card displays information on the parameter set of selected function group.

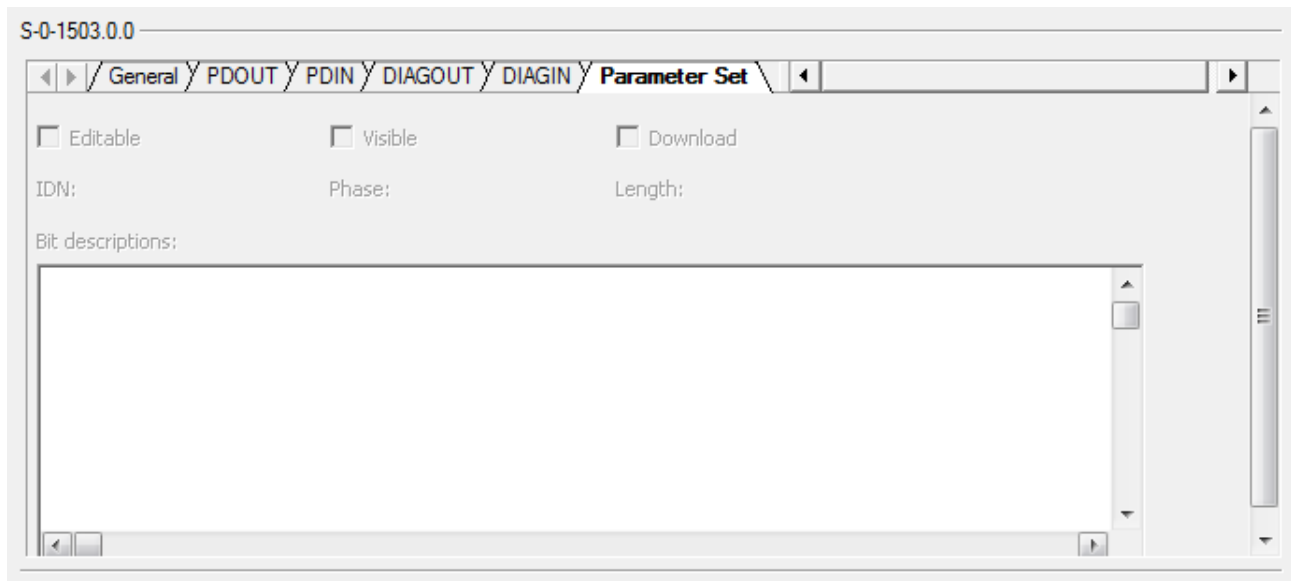


Figure 25: Configuration > Modules (Lower Part), Register Card '*Parameter Set*'

The following information is accessible on the upper part of this register card:

#### **Frame**

##### *IDN of Function Group*

The IDN assigned to a specific function group of the list in *Table 16: Available Function Groups for IO Modules* on page 40 as defined by the Sercos FSP IO specification.

#### **Text fields in upper part**

##### *IDN*

This text field contains the number of the IDN.

##### *Phase*

This text field contains the affected communication phase.

##### *Length*

This text field contains the total length.

#### **Checkboxes**

##### *Editable*

This checkbox decides whether only editable parameters of function groups or all parameters are displayed.

##### *Visible*

This checkbox decides whether only visible parameters of function groups or all parameters are displayed.

*Download*

This checkbox specifies whether a download of parameters is performed.

The following information is accessible on the lower part of this register card:

**Table in lower part**

The meaning of the various columns of the table in the lower part is the following:

*Name*

This column contains the name of the parameter associated with the selected line of the parameter set table.

*Length*

This column contains the length (specified in units of bits) of the parameter associated with the selected line of the parameter set table.

*Byte offset*

This value contains the position, i.e. the offset in bytes within the data container (for input or output data, respectively) of the data selected with this line.

*Bit offset*

This value is always 1 if the data are byte aligned. Otherwise it contains the bit offset within the respective byte.

*Value*

The numeric value of the data of the selected function group.

*Description*

This column contains a description of the meaning of the selected function group.

*Visible*

This Boolean value indicates whether the selected function group is visible or not.

*Editable*












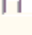
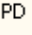
This Boolean value indicates whether the selected function group is editable or not.



### 3.8 Process Data

This dialog pane displays information on the process data (both input and output data) sorted according to modules and function groups.

PD IN:

	Type	Tag	Local Offset	Length	Comment
 <b>75x-400, 2DI, DC 24V, 3</b>	<b>75x-400, 2DI, DC 24V, 3</b>				
 Digital Input	Digital Input				
 PDIN <Channel 0>	Slot5_Input00	0	0.1		
 PDIN <Channel 1>	Slot5_Input01	0.1	0.1		
 <b>75x-402, 4DI, DC 24V, 3</b>	<b>75x-402, 4DI, DC 24V, 3</b>				
 Digital Input	Digital Input				
 PDIN <Channel 0>	Slot6_Input00	0	0.1		
 PDIN <Channel 1>	Slot6_Input01	0.1	0.1		
 PDIN <Channel 2>	Slot6_Input02	0.2	0.1		
 PDIN <Channel 3>	Slot6_Input03	0.3	0.1		
 <b>75x-404, single up/down</b>	<b>75x-404, single up/down</b>				
 Counter	Counter				
 PDIN <Channel 0>	Slot7_Input00	0	4		

PD OUT:









	Type	Tag	Local Offset	Length	Comment
 <b>75x-404, single up/down</b>	<b>75x-404, single up/down</b>				
 Counter	Counter				
 PDOUT <Channel 0>	Slot7_Output00	0	4		
 DIAGOUT <Channel 0>	Slot7_DiagOutput00	4	1		
 <b>75x-622, binary space &lt;</b>	<b>75x-622, binary space &lt;</b>				
 Digital Output	Digital Output				
 PDOUT <Channel 0>	Slot8_Output00	0	0.1		
 PDOUT <Channel 1>	Slot8_Output01	0.1	0.1		

Figure 26: Process Data Pane

This pane consists mainly of two tables:

- The upper table contains a list of channels defined of PDIN.
- The lower table contains a list of channels defined of PDOUT.

Both tables have the same structure.

The columns have the following meaning:

*Type*

This column shows the type of the channel. It is not editable.

*Tag*

This column shows a tag (short name) of the channel. This column is the only editable one in this table.

*Local offset*

This column shows the local offset of the channel as a numeric value. It is not editable.

*Length*

This column shows the length of the channel (i.e. the number of bits contained within the channel) as a numeric value in units of bits. It is not editable.

*Comment*

This column may contain a comment (originating from the SDDML file). It is not editable.

## 3.9 FSP Drive

### 3.9.1 Producer Connections

In order to configure producer connections for drives, the pane **Producer** can be used:

**Producer**

Configure producer connections:

IDN	Byte Length	Name	Producer Cycle Time (µs)
<b>Connections List</b>	<b>4</b>		
Connection Instance #0	4		2000
S-0-1500.0.2	2	IO Status	
S-0-1500.0.9	2	Container InputData	

Connection Setup (IDN/S-0-1050.x.1)

Usage of configuration (D15):

Function within connection (D14):

Source of connection configuration (D12-D13):

Type of configuration (D4-D5):

Mechanism of producing (D3):

Mechanism of monitoring (D0-D1):

OK Cancel Apply Help

Figure 27: Drive Connections > Producer

The upper part of the dialog pane displays a table containing all configured producer connections. Each entry in the table corresponds to a configured producer connection which can be selected.

The columns of this table have the following meaning:

- **IDN**

The symbolic notation of a 4-byte IDN.

- **Byte length**

If a row represents an IDN, the value in this column is the length of IDN.

If a row represents a connection, the value in this column is the total IDN data length of this connection. Please note, the current connection length (IDN S-0-1050.x.5) contains this total data length plus 2 byte connection control word.

If a row represents a connections' list, the value in this column is the total data length of all connections.

- **Name**

The name associated with the 4-byte IDN.

- **Producer Cycle Time**

The producer cycle time ( $t_{Pcyc}$ , IDN S-0-1050.x.10) specified in units of microseconds. Each connection has a producer cycle time, which should be an integer multiple of the communication cycle time ( $t_{Scyc}$ ) according to the following formula:

$$t_{Pcyc} = t_{Scyc} \times n$$

where  $n$  is a natural number.

The navigation buttons within the upper part of the dialog pane allow creation and deletion of producer connection entries. For a detailed explanation of the navigation buttons also see section "Table Line" on page 15 of this document.

Within the lower part of the dialog pane (this is below the title 'Connection Setup') you can adjust and configure the following settings related to the selected producer connection (according to IDN S-0-1050.x.1) via a separate combo box each:

#### **Usage of configuration (D15)**

Possible choices for this combo box are *Used* and *Not used*.

- **Used :**

If this option is chosen, the connection is allowed to be used by the Sercos Slave.

- **Not used :**

If this option is chosen, the Sercos Slave will not use the connection.

#### **Function within connection (D14)**

This combo box is fixed to the value *Producer*.

#### **Source of connection configuration (D12-D13)**

The only allowed choice for this combo box is currently *Master*.

**Type of configuration (D4-D5)**

Possible choices for this combo box are *variable configuration of IDNs*, *configuration with connection length* and *standard telegram*.

- variable configuration of IDNs

This choice means that the producer connection is configured with variable length using IDN S-0-1050.x.6.

- configuration with connection length

This choice means that the producer connection is configured with fixed length using C-CON IO-Control (IDN S-0-1500.x.5) and IO-Status (IDN S-0-1500.x.9). However, IDN S-0-1050.x.6 is not used in this case.

- standard telegram

This choice means that a standard telegram according to IDN S-0-0015 is used to configure the producer connection.

**Mechanism of producing (D3)**

Possible choices for this combo box are: *producer cycle synchronous* and *asynchronous*.

- producer cycle synchronous
- This choice means the producing mechanism works synchronously to the cycle of the producer.
- asynchronous
- This choice means the producing mechanism works asynchronously.

**Mechanism of monitoring (D0-D1)**

Possible choices for this combo box are *producer cycle synchronous operation*, *asynchronous operation with watchdog* and *asynchronous operation without watchdog*.

- producer cycle synchronous operation

Monitoring takes place synchronously to the cycle of the producer.

- asynchronous operation with watchdog

There is an asynchronous monitoring mechanism with a watchdog timer. The timeout value of the watchdog time corresponds to the producer cycle time (IDN S-0-1050.x.10) of this connection.

- asynchronous operation without watchdog

There is an asynchronous monitoring mechanism without any watchdog timer.

### 3.9.2 Consumer Connections

In order to configure consumer connections for drives, the pane **Consumer** can be used:

**Consumer**

Configure consumer connections:

	IDN	Byte Length	Name	Allowed Data Losses	Producer Cycle Time (µs)
[-] Connections List		4			
[-] Connection Instance #1		4		1	2000
[+] S-0-1500.0.1		2	IO Control		
[+] S-0-1500.0.5		2	Container OutputData		

Connection Setup (IDN/S-0-1050.x.1)

Usage of configuration (D15):

Function within connection (D14):

Source of connection configuration (D12-D13):

Type of configuration (D4-D5):

Mechanism of producing (D3):

Mechanism of monitoring (D0-D1):

OK Cancel Apply Help

Figure 28: Drive Connections > Consumer

The upper part of the dialog pane displays a table containing all configured consumer connections. Each entry in the table corresponds to a configured consumer connection which can be selected.

The columns of this table have the following meaning:

- **IDN**  
The symbolic notation of 4-byte IDN.
- **Byte length**  
If a row represents an IDN, the value in this column is the length of IDN.  
  
If a row represents a connection, the value in this column is the total IDN data length of this connection. Please note, the current connection length (IDN S-0-1050.x.5) contains this total data length plus 2 byte connection control word.

If a row represents connections list, the value in this column is the total data length of all connections.

- **Name**

The name associated with the 4-byte IDN.

- **Allowed Data Losses**

This value represents the allowed number of consecutive data loss events for the chosen connection before it will be interrupted. It corresponds to IDN S-0-1050.x.11.

- **Producer Cycle Time**

The producer cycle time ( $t_{Pcyc}$ , IDN S-0-1050.x.10) specified in units of microseconds. Each connection has a producer cycle time, which should be an integer multiple of the communication cycle time ( $t_{Scyc}$ ) according to the following formula:

$$t_{Pcyc} = t_{Scyc} \times n$$

where  $n$  is a natural number.

The navigation buttons within the upper part of the dialog pane allow creation and deletion of consumer connection entries. For a detailed explanation of the navigation buttons also see section “*Table Line*” on page 15 of this document.

Within the lower part of the dialog pane (this is below the title ‘Connection Setup’) you can adjust and configure the following settings related to the selected producer connection (according to IDN S-0-1050.x.1) via a separate combo box each:

#### **Usage of configuration (D15)**

Possible choices for this combo box are *Used* and *Not used*.

- **Used :**

If this option is chosen, the connection is allowed to be used by the Sercos Slave.

- **Not used :**

If this option is chosen, the Sercos Slave will not use the connection.

#### **Function within connection (D14)**

This combo box is fixed to the value *Consumer*.

#### **Source of connection configuration (D12-D13)**

The only allowed choice for this combo box is currently *Master*.

#### **Type of configuration (D4-D5)**

Possible choices for this combo box are *variable configuration of IDNs*, *configuration with connection length* and *standard telegram*.

- **variable configuration of IDNs**

This choice means that the consumer connection is configured with variable length using IDN S-0-1050.x.6.

- **configuration with connection length**

This choice means that the consumer connection is configured with fixed length using C-CON IO-Control (IDN S-0-1500.x.5) and IO-Status (IDN S-0-1500.x.9). However, IDN S-0-1050.x.6 is not used in this case.

- **standard telegram**

This choice means that a standard telegram according to IDN S-0-0015 is used to configure the consumer connection.

**Mechanism of producing (D3)**

Possible choices for this combo box are: *producer cycle synchronous* and *asynchronous*.

- producer cycle synchronous
- This choice means the producing mechanism works synchronously to the cycle of the producer.
- asynchronous
- This choice means the producing mechanism works asynchronously.

**Mechanism of monitoring (D0-D1)**

Possible choices for this combo box are *producer cycle synchronous operation*, *asynchronous operation with watchdog* and *asynchronous operation without watchdog*.

- producer cycle synchronous operation
- Monitoring takes place synchronously to the cycle of the producer.
- asynchronous operation with watchdog
- There is an asynchronous monitoring mechanism with a watchdog timer. The timeout value of the watchdog time corresponds to the producer cycle time (IDN S-0-1050.x.10) of this connection.
- asynchronous operation without watchdog
- There is an asynchronous monitoring mechanism without any watchdog timer.



### 3.9.3 Error Messages when editing Producer or Consumer Dialog Pane

When editing either in the producer or consumer dialog pane, the following error situations might occur:

#### IDN Format Error

If deviations between the specified IDN and the expected format occur, the following error message will appear:

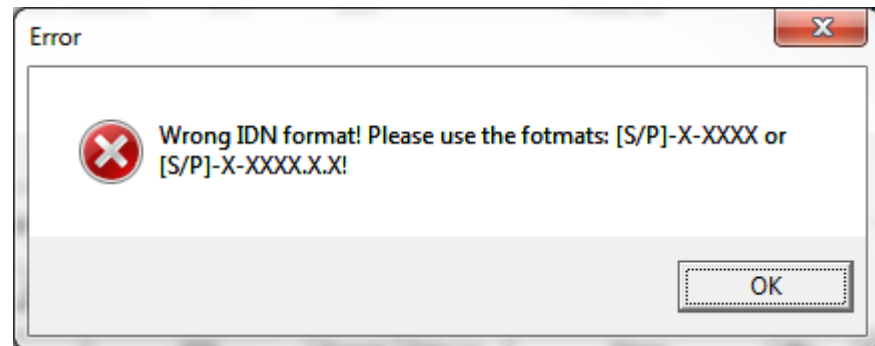


Figure 29: IDN Format Error

Correct the IDN format error then!

Only the two formats [S/P]-X-XXXX or [S/P]-X-XXXX.X.X will be accepted as valid.

#### Duplicate IDN Error

If multiple identical IDNs are specified, you will receive the following error message:



Figure 30: Duplicate IDN Error

#### Last Connection IDN Error

If there is only one single IDN configured below a connection instance and you try to delete the line representing this IDN, you will receive the following error message:

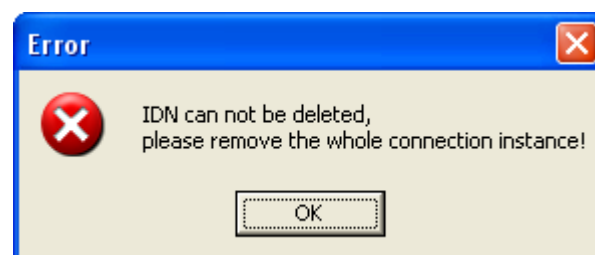


Figure 31: Last Connection IDN Error

### Range Error (concerning Byte Length)

If an incorrect value for the byte length has been specified, the following message box is issued:



Figure 32: Range Error (concerning Byte Length)

The upper value of the range mentioned here might vary depending on how much bytes have already been used by other entries.

### Common Error

If you try to store data although currently errors are indicated, the following message box will appear:

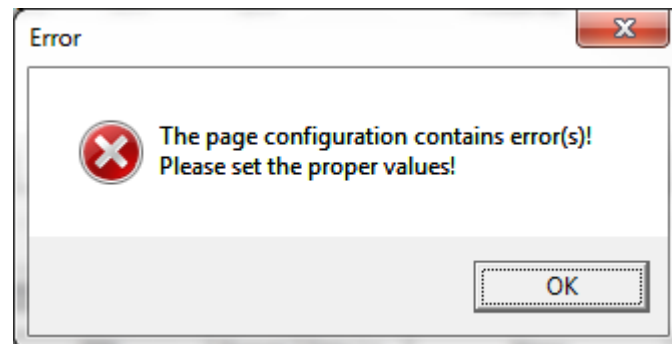




Figure 33: Common Error,

In order to solve the problem, correct the errors indicated by  or  first!

### Producer Cycle Time Error

The following error message box will be displayed only when editing the Producer dialog pane.

When entering the value of the Producer Cycle Time on the Producer dialog pane, values which are no integer multiple of the communication cycle time will cause this error message box to be displayed:

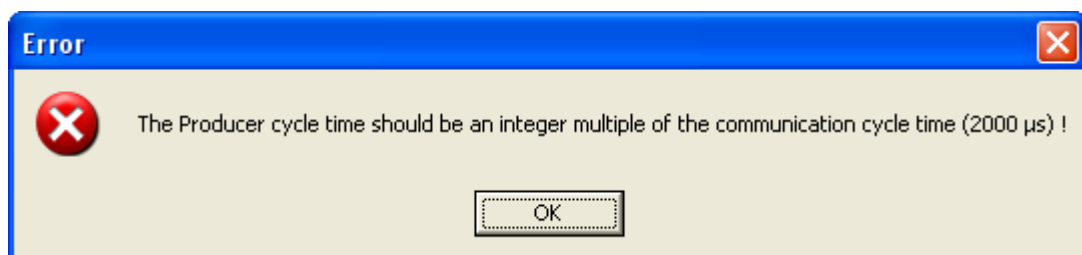


Figure 34: Producer Cycle Time Error

**Range Error (concerning Producer Cycle Time or allowed Number of lost Cycles)**

The following error message box will be displayed only when editing the Consumer dialog pane.

When entering either the value of the Producer Cycle Time or the allowed number of lost cycles on the Consumer dialog pane, incorrect input might cause this error message box to be displayed:



*Figure 35: Range Error (concerning Producer Cycle Time or allowed Number of lost Cycles)*

## 3.10 Device Description

The generic Slave DTM for Sercos allows to directly view the device description file by its integrated SDDML Viewer.

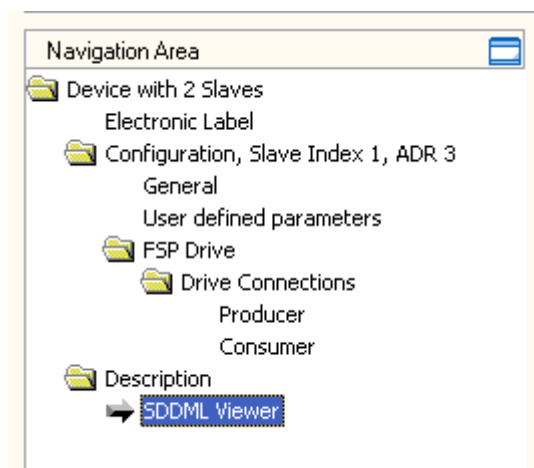


Figure 36: Navigation Area - Device Description

### 3.10.1 SDDML Viewer

The **SDDML Viewer** shows the content of the SDDML file in a text view.

Under **Filename** the absolute file directory path and the file name of the displayed SDDML file is displayed. **Find what** offers a search feature to search for text contents within the text of the SDDML file.

In the SDDML Viewer window on the left side, the line number is displayed for simple overview, the further entries show the SDDML file in text format.

Parameter	Meaning
File name	File directory path and the file name of the displayed SDDML file.
Find what	Search feature to search for text contents within the text of the SDDML file.
Match case	Search option
Match whole word	Search option

Table 17: Device Description – SDDML Viewer



Figure 37: SDDML Viewer

The **SDDML Viewer** page consists of the following elements:

- **File name** shows the absolute path of the DDF file.
- **Find what** offers searching for specific text within the DDF file.
- Using the **Find Next** button allows you to jump to the next occurrence of the text to be searched for within the XML DDF file.
- Check **Match case** if you want to perform a case-sensitive search.
- Check **Match whole word** if only entire words should match and fragments of words should be excluded from matching.



**Note:** You can also access the search functionality of the **SDDML Viewer** by typing **Ctrl-F** on the keyboard.

## 4 Online Parameterization

### 4.1 List-IDNs

Sercos administers some lists of IDNs with a common context. These IDN lists can be accessed via an own, separate IDN. This IDN is also denominated as List IDN. The following table provides all List IDNs generally defined in the Sercos standard, which should always be available.

List IDN	Associated IDN List
S-0-0017	IDN-list of all operation data
S-0-0021	IDN-list of invalid operation data for CP2
S-0-0022	IDN-list of invalid operation data for CP3
S-0-0026	Configuration list for signal status word
S-0-0027	Configuration list for signal control word
S-0-0025	IDN-list of all procedure commands
S-0-0187	IDN-list of configurable data as producer
S-0-0188	IDN-list of configurable data as consumer
S-0-0192	IDN-list of all backup operation data
S-0-0219	IDN-list of parameter set
S-0-0270	IDN list of selected backup operation data
S-0-0279	IDN list of password protected data
S-0-0327	IDN list of checksum parameter
S-0-0398	IDN list of configurable real-time/status bits
S-0-0399	IDN list of configurable real-time/control bits
S-0-0423	IDN-list of invalid data for parameterization level
S-0-0428	IDN list of configurable measuring data
S-0-0444	IDN-list of configurable data in the AT data container
S-0-0445	IDN-list of configurable data in the MDT data container

Table 18: Available IDN Lists

Values of those IDNs belonging to one of these lists can be adjusted online. This is done using the dialog page „*Online Parameterization*“ which is described in the following.

Vice versa, values of IDNs not belonging to one of these lists cannot be changed by this dialog page.

Additionally, it is possible to execute functionality stored as procedure command within an IDN. A list of all IDNs containing stored procedure commands is accessible via IDN S-0-0025

## 4.2 Invoking the Dialog Pane ‘Online Parameterization’

You can access this dialog pane via right clicking on the Slave device icon and selecting the menu entry **Configuration > Online Parameterization** if the device has already been connected correctly.

If this is not the case, you first have to connect the device before you are able to adjust the Slave parameters. For more information regarding this topic, see section „*Connecting/Disconnecting Device*“ on page 80.

This dialog pane offers you the opportunity to manually read and write parameter data and to execute procedure commands associated with certain IDNs.

In detail, the dialog pane **Configuration > Online Parameterization** looks like this:

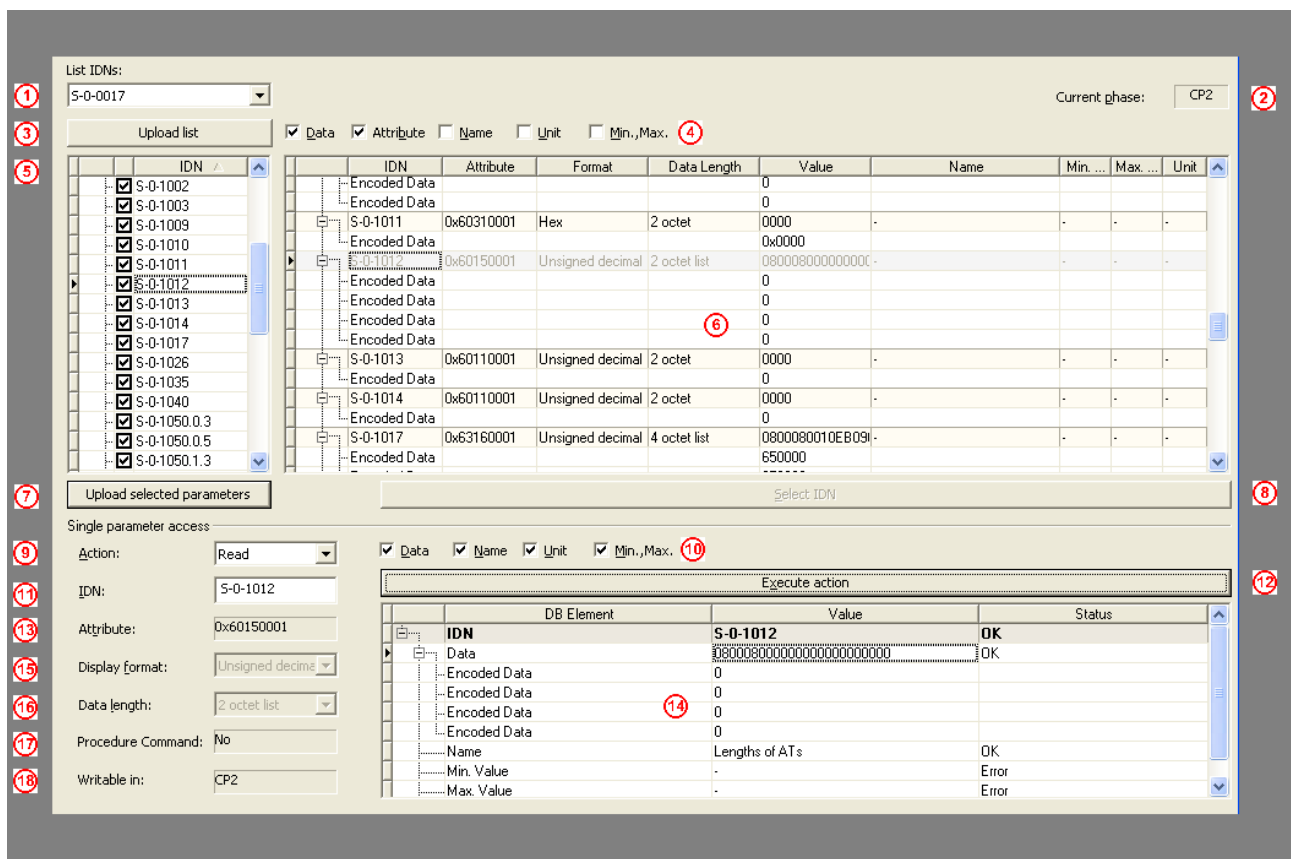


Figure 38: Configuration->Online Parameterization

In the following, the elements of the dialog pane **Configuration > Online Parameterization** are described and the main workflows are explained step-by-step:

- To display a list of available IDN lists in Sercos, follow the description in subsection „*Display of List of all IDNs stored within a List-IDN*“. You may choose an IDN list there for display of additional information. Out of this list multiple IDNs can be selected for which even more precise information can be displayed.
- In order to select the IDNs for which additional information shall be displayed, follow the description in section “*Selection of IDNs of which more precise Information is to be displayed*”.
- In order to select the IDNs for read and write access, follow the description in section “*Preselect a Data IDN for Read or Write Access*”.
- In order to select the IDNs for the execution of a procedure command stored within an IDN, follow the description in section “*Preselect a Procedure IDN for Execution*”.
- In order to perform read or write access to a Data IDN or execute a procedure command of a Procedure IDN, follow the description in section “*Execute Action*”.



## 4.3 Parts of Dialog Pane ‘Online Parameterization’

### 4.3.1 Upper Part of Dialog Pane ‘Online Parameterization’

In the upper left corner of the dialog pane, you can find a drop-down box *List IDNs* <sup>①</sup>.



Each listed item in the drop-down box represents a so called “List IDN” i.e. an IDN really containing a list of other IDN numbers. These IDN numbers are listed in the list box <sup>⑤</sup> below if you click on the *Upload List* <sup>③</sup> button right below the *List IDNs* combo box.

The columns provide the following information about each IDN:

#### **IDN**

The IDN whose information is displayed on the same line in the other columns.

#### **Attribute**

The numerical value of the attribute. This item is only displayed if the check box *Attribute* <sup>④</sup> above the table has been checked.

#### **Format**

The format (i.e. the data representation) in which the data contained in the IDN are stored (such as hexadecimal or unsigned decimal storage).

#### **Data Length**

The reserved length for storage of that data.

#### **Value**

The stored value of the IDN itself. This item is only displayed if the check box *Data* <sup>④</sup> above the table has been checked.

#### **Name**

The name of the IDN, if available. This item is only displayed if the check box *Name* <sup>④</sup> above the table has been checked.

#### **Min.**

The minimum allowed value of the value of the IDN. This item is only displayed if the check box *Min.,Max.* <sup>④</sup> above the table has been checked.

#### **Max.**

The maximum allowed value of the value of the IDN. This item is only displayed if the check box *Min.,Max.* <sup>④</sup> above the table has been checked.

### Unit

The unit associated with the value of the IDN, if any is associated at all. This item is only displayed if the check box *Unit*<sup>④</sup> above the table has been checked.

For each displayed IDN, the table contains one line containing the above mentioned information about the IDN itself, and, if necessary, one or more additional lines for possibly present data (depending on the chosen IDN). In these additional lines, only the columns *IDN* and *Value* are filled.

Some additional information on these columns follow here:

#### 4.3.1.1 Attribute

This column contains additional information required for administrative purposes. It is mandatory.

It is a 32-bit wide bit mask to be interpreted according to the subsequent table:



**Note:** UTF8 is supported.

**Coding of Attribute Information in IDN**

D31	D30	D29	D28	D27-D24	D23	D22-D20	D19	D18-D16	D15-D0
									Conversion factor used for conversion of data to display format, specified as unsigned integer. Use 1 if not required (for instance for binary, character string or floating point number data)
								Data length (required for correct termination of data transmission on the service channel)	
								000	Reserved
								001	Two bytes of operation data
								010	Four bytes of operation data
								011	Eight bytes of operation data
								100	Length is variable/1-byte data strings
								101	Length is variable/2-byte data strings
								110	Length is variable/4-byte data strings
								111	Length is variable/8-byte data strings
							Function		
							0	Operation data/parameter	
							1	Command	
						Coding for data type and display format			
							Data type		Display format
						000	Binary value		Binary
						001	Unsigned integer		Decimal
						010	Signed integer		Decimal + sign
						011	Unsigned integer		Hexadecimal

**Coding of Attribute Information in IDN**

D31	D30	D29	D28	D27-D24	D23	D22-D20	D19	D18-D16	D15-D0
						100	Extended character set		Text
						101	Unsigned integer		IDN
						110	ANSI 754-1985 floating point number (single precision)		Decimal value with exponent (fraction after decimal point is not taken into account)
						111	Reserved		Reserved
					Reserved				
				Position of decimal point for input and display (not applicable to floating point data)					
				0000	No places following the decimal point				
				...					
				1111	15 places following the decimal point				
			Write protection in CP2						
			0	Write protection not effective for operation data					
			1	Write protection effective for operation data					
		Write protection in CP3							
		0	Write protection not effective for operation data						
		1	Write protection effective for operation data						
	Write protection in CP4								
	0	Write protection not effective for operation data							
	1	Write protection effective for operation data							
Reserved									

Table 19: Coding of Attribute Information in IDN

The display format and the data length must match. Corresponding combinations are marked in the table below:

Data Length	Binary	Unsigned decimal	Signed decimal	Hex	Text	IDN	Float	Time
2 octet	Yes	Yes	Yes	Yes	No	No	No	No
4 octet	Yes	Yes	Yes	Yes	No	Yes	Yes	No
8 octet	Yes	Yes	Yes	Yes	No	No	Yes	Yes
1 octet	No	Yes	No	Yes	Yes	No	No	No
2 octet list	Yes	Yes	Yes	Yes	No	No	No	No
4 octet list	Yes	Yes	Yes	Yes	No	Yes	Yes	No
8 octet list	Yes	Yes	Yes	Yes	No	No	Yes	Yes

Table 20: Allowed Combinations of Display Format and Data Length

For more information on the extended character set see the specification of Sercos in the third generation, appendix E.


#### 4.3.1.2 Value

This column contains the stored value of the IDN itself.



---

**Note:**

This item is only displayed if the check box *Data*  above the table has been checked.

---

There are 3 formats defined in the Sercos standard which can be applied here:

- Fixed length format with 2 bytes
- Fixed length format with 4 bytes
- Variable length format with support for up theoretically up to 65532 bytes (limited to 1368 bytes in the current implementation of the Sercos firmware.)

In case of the variable length format these bytes are structured as follows:

- The first two bytes contain the hexadecimally coded value of the current length of the data. This is the text the Master proposes to the Slave. If these two bytes are 0, no other data are required and a zero-length datum will be defined therefore.
- The next two bytes contain the hexadecimally coded value of the maximum allowed length of data if the Slave is permitted to change the text. (If this length is equal to 0, the Slave is not permitted to do so.)
- Beginning from the fifth byte there is a string consisting of up to 1368 bytes (characters) space for the data of the object assigned to the IDN. Characters exceeding the amount specified in the length bytes should be truncated by the Sercos Slaves.

#### 4.3.1.3 Name

This column holds the name of the operational data which are stored under the respective IDN. It is optional.

The length is limited to at most 64 bytes. At least 2 bytes need to be used.

These bytes are structured as follows:

- The first two bytes contain the hexadecimally coded value of the length of the programmed text. This is the text the Master proposes to the Slave. If these two bytes are 0, no other data are required and a zero-length name will be defined therefore.
- The next two bytes contain the hexadecimally coded value of the maximum allowed length of this text if the Slave is permitted to change the text. (If this length is equal to 0, the Slave is not permitted to do so.)
- Beginning from the fifth byte there is a string consisting of up to 60 bytes (characters) space for the actual name of the object assigned to the IDN. Characters exceeding the amount specified in the length bytes should be truncated by the Sercos Slaves.

Also see *Figure 1: Name structure* of the Sercos Spec:

For more information, refer to the specification of Sercos in the third generation.

#### 4.3.1.4 Min.

This column holds the minimum value allowed for the operational data which are stored under the respective IDN. It is optional.

Lower values cannot be processed by the Slave, i.e. when a write request occurs with a lower value, the original value will not be changed..


The length is fixed to 64 bytes.

In the following cases this element is not applicable:

- Working with binary numbers
- Working with character strings
- Operation data have variable length



**Note:**

This item is only displayed if the check box *Min.,Max.*  above the table has been checked!

#### 4.3.1.5 Max.

This column holds the maximum value allowed for the operational data which are stored under the respective IDN. It is optional.

Higher values cannot be processed by the Slave, i.e. when a write request occurs with a higher value, the original value will not be changed.

The length is fixed to 64 bytes.

In the following cases this element is not applicable:

- Working with binary numbers
- Working with character strings
- Operation data have variable length

**Note:**

This item is only displayed if the check box *Min.,Max.* ④ above the table has been checked!

---

#### 4.3.1.6 Unit

This column holds the name of unit to be applied to the operational data which are stored under the respective IDN. It is optional.



---

**Note:**

This item is only displayed if the check box *Unit*<sup>④</sup> above the table has been selected!

---

For each displayed IDN, the table contains one line containing the above mentioned information about the IDN itself, and, if necessary, one or more additional lines for eventually present data (depending on the chosen IDN). In these additional lines, only the columns *IDN* and *Value* are filled.

The length is limited to at most 16 bytes. At least 2 bytes need to be used.

These bytes are structured as follows:

- The first two bytes contain the hexadecimally coded value of the length of the programmed text. This is the text the Master proposes to the Slave. If these two bytes are 0, no other data are required and a zero-length name will be defined therefore.
- The next two bytes contain the hexadecimally coded value of the maximum allowed length of this text if the Slave is permitted to change the text. (If this length is equal to 0, the Slave is not permitted to do so.)
- Beginning from the fifth byte there is a string consisting of up to 12 bytes (characters) space for the actual unit of the object assigned to the IDN. Characters exceeding the amount specified in the length bytes should be truncated by the Sercos Slaves.

When the data type is either binary or character string, the data has no unit.

Also see *Figure 2: Unit structure* of the specification of Sercos in the third generation.



---

**Note:** As the service channel transfers data in a word-aligned manner, it is recommended to use even values for the two length specifications described in this context.

---

For more information, refer to the specification of Sercos in the third generation.

### 4.3.2 Lower Part of Dialog Pane ‘Online Parameterization’

You can highlight one single line of the large table<sup>⑥</sup> in the upper right part of the dialog pane representing one specific IDN in order to be accessed within lower part of the dialog pane. (In the example given above in figure “Figure 44: Upper right part of dialog pane "Online Parameterization"” on page 76, this specific IDN is IDN S-0-1012.)

DB Element	Value	Status
IDN	S-0-1012	OK
Data	180008000000000000000000	OK
Encoded Data	0	
Encoded Data	0	
Encoded Data	0	
Encoded Data	0	
Name	Lengths of ATs	OK
Min. Value	-	Error
Max. Value	-	Error

Figure 39: Lower Part of the Dialog Pane

The drop-down list *Action*<sup>⑨</sup> on the left side of the lower part of the dialog pane allows you now to decide whether to read, write or execute the IDN

Figure 40: Combo Box 'Action'

The *IDN* field<sup>⑪</sup> shows the selected IDN according to the procedure described above:

Figure 41: IDN field

This field is editable.

The *Attribute* field<sup>⑬</sup> shows the attribute data of the selected IDN in hexadecimal representation. It is interpreted according to the procedure described in section *Attribute*. This field is not editable.

The field *Display format*<sup>⑮</sup> informs about the data format in which the data are stored and display depending on the data type.

The following display formats are possible:

- Binary
- Unsigned decimal
- Signed decimal
- Hex
- Text
- IDN
- Float
- Time



This field is not editable.

The field *Data length*<sup>(16)</sup> informs about the data length of the data associated with the IDN.

The following values are possible:

- 2 octet
- 4 octet
- 8 octet
- 1 octet
- 2 octet list
- 4 octet list
- 8 octet list

This field is not editable.

The field *Procedure command*<sup>(17)</sup> shows whether the IDN contains a procedure command which can be executed by selecting *Execute* in the drop-down list *Action*<sup>(9)</sup>, or not. This field is not editable.

The field *Writable in*<sup>(18)</sup> displays the communication phase(s), when the IDN is writable. This field is not editable.

	DB Element	Value	Status
<b>IDN</b>		<b>S-0-1012</b>	<b>OK</b>
Data		00000000000000000000000000000000	OK
Encoded Data		0	
Encoded Data		0	
Encoded Data		0	
Encoded Data		0	
Name		Lengths of ATs	OK
Min. Value		-	Error
Max. Value		-	Error

Figure 42: Table for reading and writing values of IDN Data and for Execution of Procedure Commands

The following is the meaning of the columns of table<sup>(14)</sup> in the right lower part of the dialog pane:

- The column *DB Element* lists the elements of the selected IDNs such as data, name, unit, minimum and maximum value.
- The column *Value* contains the value of the DB Element. The value is editable.
- The column *Status* shows whether changes were successful (*Ok*) or unsuccessful (*Error*).

Three kinds of actions can be performed with a single parameter of an IDN:

- Reading an IDN
- Writing an IDN
- Executing the procedure command associated to an IDN

The first two actions are described in detail in subsection “*Preselect a Data IDN for Read or Write Access*” on page 77, the third “*Preselect a Procedure IDN for Execution*” on page 78.

In order to make your changes effective, you can click the Execute Action button. For more details, see subsection “*Execute Action*” on page 79.

## 4.4 Step-by-step Instructions for Dialog Pane ‘Online Parameterization’

### 4.4.1 Display of List of all IDNs stored within a List-IDN

Proceed as follows in order to fill the table in the left upper part of the dialog pane with those IDNs which belong to the selected List IDN:

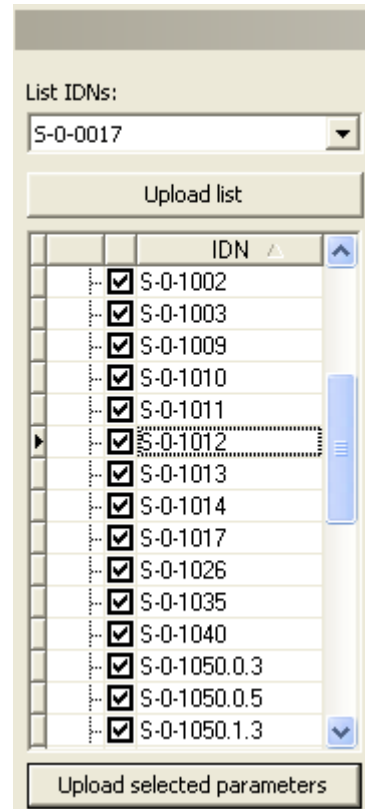


Figure 43: List of all IDNs stored within a List-IDN

- Select one of the displayed available List IDNs from the drop down list *List IDNs*
- Click at the button *Upload list* to upload the list associated with the chosen List IDN.



- The table in the left upper part of the dialog pane with the listed IDNs is now filled with the IDN numbers of all IDNs currently listed within the chosen List IDN.

#### 4.4.2 Selection of IDNs of which more precise Information is to be displayed

In the next step, you may choose which IDNs should be displayed in detail in the large table in the upper right part of the dialog pane. This done by checking or unchecking the check boxes just left of the IDN numbers.

You may choose none, a single, multiple or all IDN numbers for display in the large table on the upper right part of the dialog pane.

To select all IDNs,

- check the check box at the List IDN itself (serving as the root item of the displayed tree view), and all subordinated IDNs will be checked as well immediately.

To exclude all IDNs from selection,

- uncheck the List IDN itself similarly.

To select or unselect a single IDN,

- only check or uncheck the check box located at that IDN.

In order to display those selected IDNs,

- Just click the button *Upload Selected Parameters*.

- The large table in the upper right part of the dialog pane will now be filled with all relevant information about the selected IDNs. It looks like:

<input checked="" type="checkbox"/> Data <input checked="" type="checkbox"/> Attribute <input type="checkbox"/> Name <input type="checkbox"/> Unit <input type="checkbox"/> Min.,Max.									
	IDN	Attribute	Format	Data Length	Value	Name	Min. ...	Max. ...	Unit
<input type="checkbox"/>	Encoded Data				0				
<input type="checkbox"/>	Encoded Data				0				
<input type="checkbox"/>	S-0-1011	0x60310001	Hex	2 octet	0000	-	-	-	-
<input type="checkbox"/>	Encoded Data				0x0000				
<input checked="" type="checkbox"/>	S-0-1012	0x60150001	Unsigned decimal	2 octet list	0800080000000000	-	-	-	-
<input type="checkbox"/>	Encoded Data				0				
<input type="checkbox"/>	Encoded Data				0				
<input type="checkbox"/>	Encoded Data				0				
<input type="checkbox"/>	Encoded Data				0				
<input type="checkbox"/>	S-0-1013	0x60110001	Unsigned decimal	2 octet	0000	-	-	-	-
<input type="checkbox"/>	Encoded Data				0				
<input type="checkbox"/>	S-0-1014	0x60110001	Unsigned decimal	2 octet	0000	-	-	-	-
<input type="checkbox"/>	Encoded Data				0				
<input type="checkbox"/>	S-0-1017	0x63160001	Unsigned decimal	4 octet list	0800080010EB09	-	-	-	-
<input type="checkbox"/>	Encoded Data				650000				

Figure 44: Upper right part of dialog pane "Online Parameterization"

For a description of the single columns see section „Parts of Dialog Pane 'Online Parameterization'“.

### 4.4.3 Preselect a Data IDN for Read or Write Access

In order to preselect a single parameter of a specific Data IDN for read or write access do the following:

- Highlight the line of your choice in the large table in the upper right part of the dialog pane.
- Click on the button “*Select IDN*” in the center of the dialog pane.
- The row will optically be highlighted.

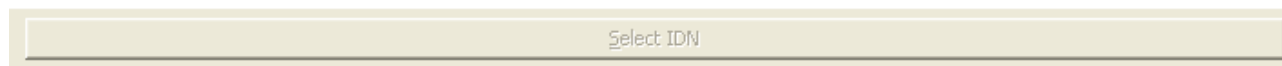


Figure 45: Button 'Select IDN'

- The IDN associated to the chosen line is selected for single parameter access. Which specific IDN has been chosen is now displayed on the left side at *IDN*.

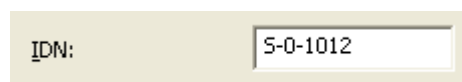


Figure 46: IDN Display

- Everything displayed within the lower part of the dialog pane i.e. below the line with the text “Single parameter access” now just relates to this chosen IDN.
- The table on the right side of the lower part of the dialog pane is now filled with current data. It allows you to enter the data to be changed.

Execute action			
	DB Element	Value	Status
[-]	<b>IDN</b>	<b>S-0-1012</b>	<b>OK</b>
▶ [-]	Data	080008000000000000000000	OK
	Encoded Data	0	
	Encoded Data	0	
	Encoded Data	0	
	Encoded Data	0	
	Name	Lengths of ATs	OK
	Min. Value	-	Error
	Max. Value	-	Error

Figure 47: Lower Part of the Dialog Pane

In order to definitely perform the read or write access, follow the description in section „Execute Action“.

#### 4.4.4 Preselect a Procedure IDN for Execution

In order to preselect a single parameter of a specific Procedure IDN for read or write access, proceed as follows:

- Highlight the line of your choice in the large table in the upper right part of the dialog pane.
- Click on the button “*Select IDN*” in the center of the dialog pane.



Figure 48: Button 'Select IDN'

- The IDN associated to the chosen line is selected for single parameter access. Which specific IDN has been chosen is now displayed on the left side at *IDN*.

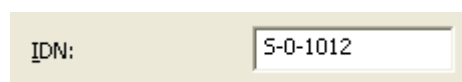


Figure 49: IDN Display

- Everything displayed within the lower part of the dialog pane i.e. below the line with the text “Single parameter access” now just relates to this preselected IDN.
- The table on the right side of the lower part of the dialog pane is now filled with current data. It allows you to enter the data to be changed.

Execute action			
	DB Element	Value	Status
<input checked="" type="checkbox"/>	<b>IDN</b>	<b>S-0-1012</b>	<b>OK</b>
<input checked="" type="checkbox"/>	Data	08000800000000000000000000000000	OK
<input type="checkbox"/>	Encoded Data	0	
<input type="checkbox"/>	Encoded Data	0	
<input type="checkbox"/>	Encoded Data	0	
<input type="checkbox"/>	Encoded Data	0	
<input type="checkbox"/>	Name	Lengths of ATs	OK
<input type="checkbox"/>	Min. Value	-	Error
<input type="checkbox"/>	Max. Value	-	Error

Figure 50: Lower Part of the Dialog Pane

In order to definitely perform the procedure command stored within the IDN, follow the description in section „*Execute Action*“.

### 4.4.5 Execute Action

Um Lese- oder Schreibaufträge (bei Daten-IDNs) oder hinterlegte Prozedurkommandos (bei Prozedur-IDNs) endgültig auszuführen, verfahren Sie wie folgt:

In order to definitely perform your read or write operations on Data IDNs or execution of stored procedure calls at Procedure IDNs which you made in the *Value* column of the table:

- Click the *Execute action* button in order to make your changes effective.



Figure 51: Execute Action' Button

- Depending on the chosen action in the *Action* combo box, data are read, written or the procedure command associated to the IDN is executed.

You can use the checkboxes above the table to display or inhibit displaying the items *Data*, *Name*, *Unit*, *Minimum Value* and *Maximum Value*:

These are

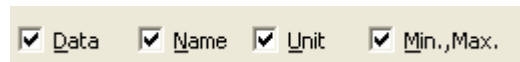


Figure 52: Checkboxes Data, Name, Unit, Minimum Value and Maximum Value

## 5 Online Functions

### 5.1 Connecting/Disconnecting Device



---

**Note:** The online parameterization requires an online connection from the generic Sercos Slave DTM to the Sercos Master DTM.

---

#### Connecting Device

The following steps are needed to establish an online connection from the generic Sercos Slave DTM to the Sercos Master DTM:

1. Connect the Master DTM to the Master device and download the configuration.



---

For further information on this question refer to the Operating Instruction Manual *DTM for Sercos Master devices*.

---

2. Put a right-click on the device icon of the generic Sercos Slave.
  3. Select the **Connect** command from the context menu (right mouse button).
- The generic Sercos Slave DTM now is connected to the Sercos Master DTM via an online connection. In the network view the device description at the device icon is displayed with a green colored background.

#### Disconnecting Device

The following steps are needed to disconnect an online connection from the generic Sercos Slave DTM to the Sercos Master DTM:

1. Close the user dialog of the generic Sercos Slave DTM via the **OK** button.
  2. Right-click on the device icon of the generic Sercos Slave.
  3. Select the **Disconnect** command from the context menu (right mouse button).
- The online connection from the generic Sercos Slave DTM to the Sercos Master DTM is disconnected. In the network view the device description is displayed not any more with a green colored background.



## 6 Appendix

### 6.1 User Rights

User-rights are set within the FDT-container. Depending on the level the configuration is accessible by the user or read-only.

To access the **Configuration** and **Device Description** panes of the generic Sercos Slave DTM you do not need special user rights. Also all users can select the decimal or hexadecimal Display mode or sort table entries.



**Note:** To edit, set or configure the parameters of the **Configuration** panes, you need user rights for *Maintenance*, for *Planning Engineer* or for *Administrator*.

The following tables give an overview of the user right groups and which user rights you need to configure the single parameters.

#### 6.1.1 Configuration

	Observer	Operator	Maintenance	Planning Engineer	Administrator
<i>General</i>	D	D	X	X	X
<i>Electronic Label</i>	D	D	X	X	X
<i>User-defined Parameters</i>	D	D	X	X	X
<i>FSP IO</i>	D	D	X	X	X
<i>FSP Drive</i>	D	D	X	X	X

Table 21: Configuration (D = Displaying, X = Editing, Configuring)

### 6.2 References

- [1] Device Type Manager (DTM) Style Guide, Version 1.0 ; FDT-JIG - Order No. <0001-0008-000>
- [2] Sercos Slave Protocol API Manual (V3), Revision 12, Hilscher GmbH 2013 (Hilscher Document ID DOC100205API11EN)
- [3] Sercos General Overview and Architecture V1.3-1.3, Sercos international 2011
- [4] Sercos Communication\_V1.3-1.9, Sercos international 2012
- [5] Sercos Parameter V1.3-1.3, Sercos international 2011
- [6] Sercos Generic Device Profile V1.3-1.2, Sercos international 2011
- [7] Sercos Function Specific Profile IO V 1.3-1.5, Sercos international 2011
- [8] Sercos Function Specific Profile Drives V 1.3-2.15, Sercos international 2011

## 6.3 List of Figures

Figure 1: Dialog Structure of the Generic Sercos Slave DTM	12
Figure 2: Navigation Area	13
Figure 3: Status Bar – Status Fields 1 to 6	16
Figure 4: Status Bar Display Example	16
Figure 5: Navigation Area for Single-Slave Devices	19
Figure 6: Dialog Pane - Single-Slave Device	19
Figure 7: Navigation Area for Multi-Slave Devices	20
Figure 8: Dialog Pane - Multi-Slave Device - Slave Selection	20
Figure 9: Navigation Area - Electronic Label	22
Figure 10: Configuration > Electronic Label	22
Figure 11: Navigation Area - Configuration for FSP IO Modules	24
Figure 12: Navigation Area - Configuration for FSP Drive Modules	25
Figure 13: Configuration > General	26
Figure 14: User-defined Parameters Dialog Pane	28
Figure 15: IDN Duplicate Error	33
Figure 16: IDN Format Error	33
Figure 17: Common Error	33
Figure 18: IO Modules Pane	37
Figure 19: Configuration > Modules (Upper Part)	39
Figure 20: Configuration > Modules (Lower Part), Register Card 'General'	41
Figure 21: Configuration > Modules (Lower Part), Register Card 'PDIN'	43
Figure 22: Configuration > Modules (Lower Part), Register Card 'PDOOUT'	44
Figure 23: Configuration > Modules (Lower Part), Register Card 'DIAGIN'	45
Figure 24: Configuration > Modules (Lower Part), Register Card 'DIAGOUT'	46
Figure 25: Configuration > Modules (Lower Part), Register Card 'Parameter Set'	47
Figure 26: Process Data Pane	49
Figure 27: Drive Connections > Producer	51
Figure 28: Drive Connections > Consumer	54
Figure 29: IDN Format Error	57
Figure 30: Duplicate IDN Error	57
Figure 31: Last Connection IDN Error	57
Figure 32: Range Error (concerning Byte Length)	58
Figure 33: Common Error,	58
Figure 34: Producer Cycle Time Error	58
Figure 35: Range Error (concerning Producer Cycle Time or allowed Number of lost Cycles)	59
Figure 36: Navigation Area - Device Description	60
Figure 37: SDDML Viewer	61
Figure 38: Configuration->Online Parameterization	63
Figure 39: Lower Part of the Dialog Pane	72
Figure 40: Combo Box 'Action'	72
Figure 41: IDN field	72
Figure 42: Table for reading and writing values of IDN Data and for Execution of Procedure Commands	73
Figure 43: List of all IDNs stored within a List-IDN	75
Figure 44: Upper right part of dialog pane "Online Parameterization"	76
Figure 45: Button 'Select IDN'	77
Figure 46: IDN Display	77
Figure 47: Lower Part of the Dialog Pane	77
Figure 48: Button 'Select IDN'	78
Figure 49: IDN Display	78
Figure 50: Lower Part of the Dialog Pane	78
Figure 51: Execute Action' Button	79

## 6.4 List of Tables

Table 1: Descriptions Dialog Panes	4
Table 2: General Device Information	13
Table 3: Overview Dialog Panes	14
Table 4: OK, Cancel, Apply and Help	15
Table 5: Selecting, inserting, deleting Table Line	15
Table 6: Status Bar Icons [1]	16
Table 7: Getting started - Configuration Steps	18
Table 8: Contents of Dialog Pane Single Slave Device /Multi Slave Device	20
Table 9: Device > Electronic Label	23
Table 10: Dialog Panes Configuration	24
Table 11: Configuration > General	26
Table 12: Possible Actions to be performed with chosen IDN	29
Table 13: Allowed Data Length Value in Dependence of Format/Data Type	30
Table 14: List of commonly available Procedure Commands	31
Table 15: Buttons for Slots in Module Configuration	37
Table 16: Available Function Groups for IO Modules	40
Table 17: Device Description – SDDML Viewer	60
Table 18: Available IDN Lists	62
Table 19: Coding of Attribute Information in IDN	67
Table 20: Allowed Combinations of Display Format and Data Length	67
Table 21: Configuration (D = Displaying, X = Editing, Configuring)	81

## 6.5 Glossary

### Bus Head

The part of an [IO Device](#) which couples the device to the bus and does not belong to any function group. In the *IO Modules - Module Configuration Table*, the bus head is always located at slot 0.

### CC

[Cross communication](#) between two Slaves

### Communication phase

During getting operational, a Sercos device runs through various phases. These are called communication phases.

For a detailed description see references [3] and [4].

### Compact IO Device

A compact IO device is an [IO Device](#) which contains one or more fixed IO functions, for instance a 16 bit digital input module could be considered to be a compact IO device. It is not structured into separate function groups or modules.

### Consumer

The consumer of a connection is a participant in unidirectional communication who receives (“consumes”) data. Within a producer-consumer model, each connection can have one or multiple consumers.

### CP

See [Communication phase](#)

### Cross communication

Communication between participants which are not in a Master-Slave-relation, for instance between 2 Slaves or between 2 Masters.

### Device Type Manager

The Device Type Manager (DTM) is a software module with graphical user interface for the configuration and/or for diagnosis of devices.

### DTM

See [Device Type Manager](#)

### Drive

A drive is a device according to FSP Drive specification.

### Electronic Label

For each Sercos device an electronic label holds device-related information. It can be accessed via IDN S-0-1300. The following items may be stored in the electronic label:

- S-0-1300.x.01 Component Name
- S-0-1300.x.02 Vendor Name

- S-0-1300.x.03 Vendor Code
- S-0-1300.x.04 Device Name
- S-0-1300.x.05 Vendor Device ID
- S-0-1300.x.06 Connected to sub-device
- S-0-1300.x.07 Function revision
- S-0-1300.x.08 Hardware Revision
- S-0-1300.x.09 Software Revision
- S-0-1300.x.10 Firmware Loader Revision
- S-0-1300.x.11 Order number
- S-0-1300.x.12 Serial Number
- S-0-1300.x.13 Manufacturing Date
- S-0-1300.x.14 QS Date
- S-0-1300.x.20 Operational Hours
- S-0-1300.x.21 Service Date
- S-0-1300.x.22 Calibration Date
- S-0-1300.x.23 Calibration Due Date

### Field Device Tool

FDT specifies an interface, in order to be able to use DTM (Device Type Manager) in different applications of different manufacturers.

### FDT

See [Field Device Tool](#)

### FSP Drive

A specification for mechanical drives to be controlled by Sercos, see reference [8].

### FSP IO

A specification for IO Devices to be controlled by Sercos, see reference [7].

### Function Group

A function group combines related functions of a module within a modular IO Device. For instance, all digital input channels of a specific module would set up a function group “*Digital Inputs*” for that module.

### Hybrid IO Device

A hybrid IO device combines an IO device (compact or modular IO Device) with a drive.

### IDN

An IDN is a unique identification number for a parameter or procedure command within Sercos. For a list of generally applicable IDNs see reference [5].

## IO Device

An IO Device is a Sercos device according to the [FSP IO](#) specification (reference [7])

In Sercos there are three kinds of IO devices defined, see there:

- [Compact IO Devices](#)
- [Modular IO Devices](#)
- [Hybrid IO Devices](#)

## Master

Sercos Master devices initiate the data traffic on the bus. In the Sercos protocol Master devices are called active participants. A Master may send messages without external request.

## Modular IO Device

A modular IO device contains a complex or variable configurable device which is structured into separate modules. For these modules, there are separate function groups defined.

## Multi-Slave Device

A multi-Slave device contains multiple Slaves in one device in a common housing which can be separately accessed but commonly administered.

## PDIN

This is an area in which process data input is stored.

## PDOUT

This is an area in which process data output is stored.

## Procedure Command

Some IDNs do not store values, but are connected to an action (the execution of a command). These are denominated as command procedures.

## Producer

The producer of a connection is a participant in unidirectional communication who sends ("produces") data. Within a producer-consumer model, each connection can have only one unique producer.

## SDDML

SDDML = Sercos Device Description Markup Language

The device description file describes the technical characteristics of a device type in an exactly defined format. SDDML descriptions are generated by the device manufacturer individually for each device type and provided to the user as SDDML files.

As the file format is standardized, the projecting system can easily access the description and take these data into account during system configuration.

**Sercos address**

A Sercos address is a numerical value in the range between 0 and 127, which is used for unique identification of a device within the Sercos network.

**Slave**

Slave devices are peripheral devices, like for example I/O devices or drives. Slave devices are also called passive participants. They do not receive the bus access authorization. That means, they may only accept received messages from the Master or send a message to the Master after enquiry of the Master.

**Structure Element**

A structure instance may be divided in one or multiple structure elements.

**Structure Instance**

An IDN may be divided in one or multiple structure instances. Each structure instance may contain one or multiple structure elements

## 6.6 Contacts

### Headquarters

#### Germany

Hilscher Gesellschaft für  
Systemautomation mbH  
Rheinstrasse 15  
65795 Hattersheim  
Phone: +49 (0) 6190 9907-0  
Fax: +49 (0) 6190 9907-50  
E-Mail: [info@hilscher.com](mailto:info@hilscher.com)

#### Support

Phone: +49 (0) 6190 9907-99  
E-Mail: [de.support@hilscher.com](mailto:de.support@hilscher.com)

### Subsidiaries

#### China

Hilscher Systemautomation (Shanghai) Co. Ltd.  
200010 Shanghai  
Phone: +86 (0) 21-6355-5161  
E-Mail: [info@hilscher.cn](mailto:info@hilscher.cn)

#### Support

Phone: +86 (0) 21-6355-5161  
E-Mail: [cn.support@hilscher.com](mailto:cn.support@hilscher.com)

#### France

Hilscher France S.a.r.l.  
69500 Bron  
Phone: +33 (0) 4 72 37 98 40  
E-Mail: [info@hilscher.fr](mailto:info@hilscher.fr)

#### Support

Phone: +33 (0) 4 72 37 98 40  
E-Mail: [fr.support@hilscher.com](mailto:fr.support@hilscher.com)

#### India

Hilscher India Pvt. Ltd.  
Pune, Delhi, Mumbai  
Phone: +91 8888 750 777  
E-Mail: [info@hilscher.in](mailto:info@hilscher.in)

#### Italy

Hilscher Italia S.r.l.  
20090 Vimodrone (MI)  
Phone: +39 02 25007068  
E-Mail: [info@hilscher.it](mailto:info@hilscher.it)

#### Support

Phone: +39 02 25007068  
E-Mail: [it.support@hilscher.com](mailto:it.support@hilscher.com)

#### Japan

Hilscher Japan KK  
Tokyo, 160-0022  
Phone: +81 (0) 3-5362-0521  
E-Mail: [info@hilscher.jp](mailto:info@hilscher.jp)

#### Support

Phone: +81 (0) 3-5362-0521  
E-Mail: [jp.support@hilscher.com](mailto:jp.support@hilscher.com)

#### Korea

Hilscher Korea Inc.  
Seongnam, Gyeonggi, 463-400  
Phone: +82 (0) 31-789-3715  
E-Mail: [info@hilscher.kr](mailto:info@hilscher.kr)

#### Switzerland

Hilscher Swiss GmbH  
4500 Solothurn  
Phone: +41 (0) 32 623 6633  
E-Mail: [info@hilscher.ch](mailto:info@hilscher.ch)

#### Support

Phone: +49 (0) 6190 9907-99  
E-Mail: [ch.support@hilscher.com](mailto:ch.support@hilscher.com)

#### USA

Hilscher North America, Inc.  
Lisle, IL 60532  
Phone: +1 630-505-5301  
E-Mail: [info@hilscher.us](mailto:info@hilscher.us)

#### Support

Phone: +1 630-505-5301  
E-Mail: [us.support@hilscher.com](mailto:us.support@hilscher.com)